



Broadcom[®] 95xx PCIe 4.0 MegaRAID[™] and HBA Tri-Mode Storage Adapters

**User Guide
Version 2.10**

Copyright © 2018–2023 Broadcom. All Rights Reserved. The term “Broadcom” refers to Broadcom Inc. and/or its subsidiaries. For more information, go to www.broadcom.com. All trademarks, trade names, service marks, and logos referenced herein belong to their respective companies.

Broadcom reserves the right to make changes without further notice to any products or data herein to improve reliability, function, or design. Information furnished by Broadcom is believed to be accurate and reliable. However, Broadcom does not assume any liability arising out of the application or use of this information, nor the application or use of any product or circuit described herein, neither does it convey any license under its patent rights nor the rights of others.

Table of Contents

Broadcom PCIe 4.0 MegaRAID and HBA Tri-Mode Storage Adapters.....	5
Overview.....	5
Features.....	7
RAID Features.....	7
Operating System Support.....	7
PCIe Host Interface.....	8
LED Management.....	8
Tri-Mode Storage Interface Features.....	8
Tri-Mode Storage Interface.....	10
SAS/SATA Support.....	10
PCIe (NVMe) Support.....	11
Common REFCLK Support.....	12
Backplane Management.....	13
Universal Backplane Management.....	13
Virtual Pin Port Management.....	13
Sideband Signals.....	13
Cables and Cabling Configurations.....	15
Storage Interface Cabling.....	16
Backplane Connectors.....	17
External Adapter Connector Pinout.....	17
CacheVault Data Protection.....	19
Adapter Security.....	20
Adapter Installation Instructions.....	21
Adapter Installation Instructions.....	21
OCP Adapter Installation Instructions.....	24
Removing the OCP Adapter.....	25
Broadcom MegaRAID and HBA Tri-Mode Storage Adapter Characteristics.....	26
MegaRAID 9560-16i Adapter – Connector and LED Designations.....	26
MegaRAID 9560-8i Adapter – Connector and LED Designations.....	27
MegaRAID 9580-8i8e Adapter – Connector and LED Designations.....	29
MegaRAID 9540-8i Adapter – Connector and LED Designations.....	30
MegaRAID 9562-16i Adapter – Connector and LED Designations.....	32
HBA 9500-16i Adapter – Connector and LED Designations.....	33
HBA 9500-8i Adapter – Connector and LED Designations.....	35
HBA 9500-16e Adapter – Connector and LED Designations.....	36

HBA 9500-8e Adapter – Connector and LED Designations	37
HBA 9502-16i Adapter – Connector and LED Designations	39
Tri-Mode Storage Adapter Technical Specifications	41
Operating and Nonoperating Conditions	41
Tri-Mode Storage Adapter Power Supply Requirements	41
MegaRAID Tri-Mode Storage Adapter Power Supply Requirements.....	41
HBA Tri-Mode Storage Adapter Power Supply Requirements.....	42
MegaRAID and HBA Tri-Mode OCP Adapter Power Supply Requirements.....	42
Marks, Certifications, Compliance, and Safety Characteristics	43
Marks, Certifications, and Compliance	43
FCC Compliance.....	45
Safety Characteristics	45
VCCI – Japan.....	45
Appendix A: Cable Drawings and Pinouts	46
Cable 05-60001-00	46
Cable 05-60002-00	48
Cable 05-60003-00	49
Cable 05-60004-00	50
Cable 05-60005-00	51
Cable 05-60006-00	52
Cable 05-60007-00	54
Appendix B: Revision History	55

Broadcom PCIe 4.0 MegaRAID and HBA Tri-Mode Storage Adapters

This document is the primary reference and user guide for the Broadcom® PCIe 4.0 MegaRAID™ tri-mode storage adapters and Broadcom PCIe 4.0 HBA tri-mode storage adapters, based on the Broadcom PCIe 4.0 tri-mode controller devices. This document contains the complete installation instructions and specifications for the following PCIe 4.0 tri-mode storage adapters, referred to as adapters.

- MegaRAID 9560-16i
- MegaRAID 9560-8i
- MegaRAID 9580-8i8e
- MegaRAID 9540-8i
- MegaRAID 9562-16i
- HBA 9500-16i
- HBA 9500-8i
- HBA 9500-16e
- HBA 9500-8e
- HBA 9502-16i

Overview

The adapters, based on the SAS3916, SAS3908, SAS3816, or SAS3808 tri-mode controller, are high-performance PCIe-to-SATA/SAS/PCIe (tri-mode) storage adapters. Broadcom tri-mode SerDes technology enables operation of SAS, SATA, or PCIe (NVMe) storage devices in a single drive bay. A single controller can operate in all three modes concurrently: SAS, SATA, and PCIe/NVMe. The adapters negotiate between the speeds and the protocols to recognize and concurrently interface with these three storage devices types.

The adapters provide the following storage interface data transfer rates:

- SAS data transfer rates of 12Gb/s, 6Gb/s, and 3Gb/s per phy
- SATA transfer rates at 6Gb/s and 3Gb/s per phy
- PCIe (NVMe) data transfer rates of 16 GT/s, 8 GT/s, 5 GT/s, and 2.5 GT/s per lane

The following tables summarize key adapter features.

Table 1: MegaRAID Tri-Mode Storage Adapter Features

Adapter	9560-16i	9560-8i	9580-8i8e	9540-8i	9562-16i
Ports	16 internal	8 internal	8 internal, 8 external	8 internal	16 internal
I/O Processor	SAS3916	SAS3908	SAS3916	SAS3808	SAS3916
Form Factor	LP-MD2	LP-MD2	LP-MD2	LP-MD2	OCP NIC 3.0 SFF
Storage Interface Connectors	Two SFF-8654 x8	One SFF-8654 x8	One SFF-8654 x8, Two SFF-8644 x4	One SFF-8654 x8	Two SFF-8654 x8 (vertical)
Host Interface	x8 PCIe 4.0	x8 PCIe 4.0	x8 PCIe 4.0	x8 PCIe 4.0	x8 PCIe 4.0
Storage Interface	SAS, SATA, and PCIe (NVMe)	SAS, SATA, and PCIe (NVMe)	SAS, SATA, and PCIe (NVMe)	SAS, SATA, and PCIe (NVMe)	SAS, SATA, and PCIe (NVMe)

Adapter	9560-16i	9560-8i	9580-8i8e	9540-8i	9562-16i
Cache Memory	8 GB, 2666 MT/s, DDR4 SDRAM	4 GB, 2666 MT/s, DDR4 SDRAM	8 GB, 2666 MT/s, DDR4 SDRAM	—	8 GB, 2666 MT/s, DDR4 SDRAM
Cache Protection	Yes	Yes	Yes	—	Yes
Super Capacitor	CVPM05 module	CVPM05 module	CVPM05 module	—	CVPM05 module

Table 2: HBA Tri-Mode Storage Adapter Features

Adapter	9500-16i	9500-8i	9500-16e	9500-8e	9502-16i
Ports	16 internal	8 internal	16 external	8 external	16 internal
I/O Processor	SAS3816	SAS3808	SAS3816	SAS3808	SAS3816
Form Factor	LP-MD2	LP-MD2	LP-MD2	LP-MD2	OCP NIC 3.0 SFF
Storage Interface Connectors	Two SFF-8654 x8	One SFF-8654 x8	Four SFF-8644 x4	Two SFF-8644 x4	Two SFF-8654 x8 (vertical)
Host Interface	x8 PCIe 4.0	x8 PCIe 4.0	x8 PCIe 4.0	x8 PCIe 4.0	x8 PCIe 4.0
Storage Interface	SAS, SATA, and PCIe (NVMe)	SAS, SATA, and PCIe (NVMe)	SAS, SATA, and PCIe	SAS, SATA, and PCIe	SAS, SATA, and PCIe (NVMe)

Features

RAID Features

The following list includes primary RAID features that the MegaRAID adapters support. For a full description of the RAID features, refer to the *12Gb/s MegaRAID Tri-Mode Software User Guide*, located at <http://www.broadcom.com/support/download-search>.

- RAID levels 00, 0, 1, 5, and 6
- RAID spans 10, 50, and 60
- JBOD mode with RAID0, RAID1, and RAID10
- JBOD for SDS environments
- Online Capacity Expansion (OCE)
- Auto resume after loss of system power during array rebuild or OCE
- Single controller multipathing
- Load balancing
- Configurable stripe size up to 1 MB
- Fast initialization for quick array setup
- Check Consistency for background data integrity
- SSD support with SSD Guard™ technology
- Patrol read for media scanning and repairing
- Disk data format (DDF)-compliant Configuration on Disk (COD)
- Self-Monitoring, Analysis, and Reporting Technology (S.M.A.R.T) support
- Global and dedicated hot spare with revertible hot spare support
- Automatic rebuild
- Enclosure affinity
- Emergency SATA hot spare for SAS arrays
- Enclosure management
- SCSI Enclosure Services (SES) (inband)
- SGPIO (sideband)
- DataBolt bandwidth optimizer technology support for compatible expander-based enclosures
- Shield state drive diagnostic technology

Operating System Support

The tri-mode storage adapters support the operating systems in the following list. For specific version information, refer to the *MegaRAID Tri-Mode Device Driver Installation User Guide*, located at <http://www.broadcom.com/support/download-search>.

- Microsoft Windows
- VMware vSphere/ESXi
- Red Hat Enterprise Linux
- SuSE Linux
- Ubuntu Linux
- Citrix XenServer
- CentOS Linux
- Debian Linux
- Oracle Enterprise Linux
- Fedora
- FreeBSD

The firmware and drivers are routinely updated and made available on the Broadcom Support and Download center. Visit <http://www.broadcom.com/support/download-search> and download the latest firmware and driver for the adapter.

PCIe Host Interface

The adapter's PCIe 4.0 host interface provides maximum transmission and reception rates of up to 128 GT/s (16GB/s per lane). The tri-mode controller uses a packet-based communication protocol to communicate over the serial interconnect. Other PCIe host interface features include the following:

- Eight-lane PCIe host interface
- PCIe Hot-Plug
- Power management:
 - Supports the *PCI Bus Power Management Interface Specification Revision 1.2*
 - Supports Active State Power Management, including the L0 states, by placing links in a power-saving mode during times of no link activity
- Error handling
- High bandwidth per pin with low overhead and low latency
- Lane reversal and polarity inversion
- Single-phy (one-lane) link transfer rate of 16 GT/s, 8 GT/s, 5 GT/s, and 2.5 GT/s in each direction
- Eight-lane aggregate bandwidth of up to 16GB/s (16,000 MB/s)
- Support of x8, x4, x2, and x1 link widths

LED Management

The internal adapters offer LED management support for SAS/SATA backplanes and (PCIe) NVMe backplanes. External connect adapters offer enclosure LED management support for enclosure implementations through SES. See [Backplane Management](#) for more information.

Tri-Mode Storage Interface Features

The adapter's storage interface supports concurrent operation with SAS, SATA, and PCIe (NVMe) devices to provide a fully functional solution for any storage environment.

- PCIe (NVMe) interface features:
 - Up to sixteen x1, eight x2, or four x4 NVMe direct-attach drive support
 - Data transfer at 16 GT/s, 8 GT/s, 5 GT/s, and 2.5 GT/s
 - Independent resets and configuration
 - Common reference clock and separate reference clock independent SSC (SRIS) support
- SAS features:

- SAS data transfers at 12Gb/s, 6Gb/s, and 3Gb/s
- DataBolt technology on all SAS phys to improve performance
- Serial, point-to-point, enterprise-level storage interface
- Wide ports that contain multiple phys
- Narrow ports that contain a single phy
- SAS phy power management
- Data transfer by using SCSI information units
- T10 data protection management
- Support for persistent connection capability
- Support for SPL-3 initiate close capability
- Configurable Rx and Tx polarity inversion
- Configurable phy-to-disk mapping
- Configurable SSC
- SATA interface features:
 - SATA and STP data transfers at 6Gb/s and 3Gb/s
 - Addressing of multiple SATA targets through an expander

Tri-Mode Storage Interface

The internal adapters can direct attach to SAS, SATA, or NVMe drives. The internal and external adapters support drive attach through PCIe switches or expanders.

NOTE

Carefully assess any decision to mix SAS and SATA drives within the same virtual drive (VD). Although you can mix drives, the practice is discouraged.

MegaRAID does not permit mixing SAS and NVMe drives or SATA and NVMe drives within the same VD. To mix NVMe and SAS/SATA drives on a MegaRAID adapter, you must configure the drives in separate VDs.

SAS/SATA Support

The adapters support internal and external storage devices, which allow you to use a system that supports enterprise-class SAS drives and desktop-class SATA III drives.

The storage interface is comprised of either 16 phys or 8 phys, depending on the controller. Dedicated hardware manages the phys in groups of eight, in ascending phy order. One dedicated instance of the SAS phy management hardware manages PHY 0 to PHY 7, and a separate instance of the SAS phy management hardware manages PHY 8 to PHY 15. These SAS phy management hardware instances, or SAS cores, cannot communicate with each other.

When you configure a wide port, the connections must attach exclusively to phys all managed by the same SAS core. If the ports are not managed by the same SAS core, unexpected controller and host behavior occurs. Port 0 to port 7 can be configured as eight separate ports or combined into one or more groups called wide ports (one x4, two x4s, one x8, and so on). Similarly, port 8 to port 15 can be configured as eight separate ports or combined into one or more wide ports. A single wide port cannot combine individual ports or phys sourced by different SAS cores.

The following table indicates the connector-to-SAS core mapping for each adapter. The card layout figures in [Broadcom MegaRAID and HBA Tri-Mode Storage Adapter Characteristics](#) show the connector designations for each adapter.

Table 3: Adapter Port-to-SAS Port Associations

Adapter	Connector 0	Connector 1	Connector 2	Connector 3
9560-16i	SAS Core 0	SAS Core 1	N/A	N/A
9560-8i	SAS Core 0	N/A	N/A	N/A
9580-8i8e	SAS Core 1	SAS Core 0	SAS Core 0	N/A
9540-8i	SAS Core 0	N/A	N/A	N/A
9562-16i	SAS Core 0	SAS Core 1	N/A	N/A
9500-16i	SAS Core 0	SAS Core 1	N/A	N/A
9500-8i	SAS Core 0	N/A	N/A	N/A
9500-16e	SAS Core 0	SAS Core 0	SAS Core 1	SAS Core 1
9500-8e	SAS Core 0	SAS Core 0	N/A	N/A
9502-16i	SAS Core 0	SAS Core 1	N/A	N/A

When you configure a boot device in a multipath environment, the target must connect to one or more ports on the same SAS core with AutoPortConfig enabled. The boot device appears to the host system as a single device on the active path. The multipath environment manages a different controller as the passive path.

When you configure data-storage devices in a multipath environment, the rule for creating wide ports applies, but multiple ports from different SAS cores can connect to the data-storage devices. The multipath environment manages data-storage devices that the controller presents more than once.

PCIe (NVMe) Support

The following table shows how many NVMe drives or Broadcom PEX88000-series switches can directly attach to each adapter. The HBA 9500-16e and HBA 9500-8e adapters do not support direct attach to NVMe drives. The expected topology for the HBA 9500-16e and HBA 9500-8e adapters is a typical JBOF scenario that uses a switch to connect the NVMe drives.

The adapters do not support switch connections wider than x4 and one level deep.

Table 4: NVMe Devices or PCIe Switch Direct-Attach Options Supported for Each Adapter

Adapter	x4 NVMe Drives	x2 NVMe Drives	x1 NVMe Drives	x4 Switch
9560-16i	4	8	16	4
9560-8i	2	4	8	2
9580-8i8e	2	4	8	4
9540-8i	2	4	4	0
9562-16i	4	8	16	4
9500-16i	4	8	16	4
9500-8i	2	4	8	2
9500-16e	0	0	0	4
9500-8e	0	0	0	2
9502-16i	4	8	16	4

The tri-mode device interface contains a SAS core and a PCIe device bridge (PDB). The PDB enables the PCIe (NVMe) storage interface connections, and each PDB can support direct connect to NVMe devices or to x4 PCIe switches. The storage interface is comprised of 16 phys or 8 phys depending on the controller. One PDB manages PHY 0 to PHY 7, and a second PDB manages PHY 8 to PHY 15. The PDBs cannot communicate with each other. This means that a PCIe port of greater than one lane must attach exclusively to phys all managed by the same PDB and must be comprised of adjacent lanes.

The following table indicates how the connectors map to the PDB for each adapter. The card layout figures in [Broadcom MegaRAID and HBA Tri-Mode Storage Adapter Characteristics](#) show the connector designations for each adapter.

Table 5: Adapter Lanes-to-PDB Core Associations

Adapter	Connector 0	Connector 1	Connector 2	Connector 3
9560-16i	PDB 0	PDB 1	N/A	N/A
9560-8i	PDB 0	N/A	N/A	N/A
9580-8i8e	PDB 1	PDB 0	PDB 0	N/A
9540-8i	PDB 0	N/A	N/A	N/A
9562-16i	PDB 0	PDB 1	N/A	N/A
9500-16i	PDB 0	PDB 1	N/A	N/A

Adapter	Connector 0	Connector 1	Connector 2	Connector 3
9500-8i	PDB 0	N/A	N/A	N/A
9500-16e	PDB 0	PDB 0	PDB 1	PDB 1
9500-8e	PDB 0	PDB 0	N/A	N/A
9502-16i	PDB 0	PDB 1	N/A	N/A

Common REFCLK Support

The adapter uses x8 SFF-8654 (SlimSAS) connectors. Each connector is divided into two quadrants. For connections that require a common REFCLK, one REFCLK is supplied for each quadrant. For x4 NVMe or PCIe switch connections, the REFCLK sourced by each quadrant directly clocks each attached x4 PCIe connection.

To directly attach x2 or x1 NVMe drives that require a common REFCLK, where more than one drive is sourced from a single quadrant, you must properly fan out the shared REFCLK on the backplane. For x2 and x1 NVMe connections, use SRIS-enabled drives to avoid fanning the clock out on the backplane.

Backplane Management

The SFF-8448 standard defines how to detect whether the backplane supports a SGPIO or two-wire interface (I²C) for SAS/SATA usage. SFF-9402 is a superset of SFF-8448, adding the PCIe-defined sideband signal, which means that SAS/SATA users see no change in backplane management detection when using the adapters.

Universal Backplane Management

The adapters provide LED operation and other backplane management of NVMe only, SAS/SATA only, or mixed-protocol backplanes based on the SFF-TA-1005 specification. SFF-TA-1005 is an industry-standard backplane management specification commonly known as Universal Backplane Management (UBM). As long as the backplane management controller is designed in accordance with the UBM specification, the adapter automatically detects the backplane type and functions appropriately.

The adapter supports the industry-standard *SFF-TA-1005 Specification for Universal Backplane Management (UBM)*. UBM provides the following key features:

- Reports the backplane capabilities, including the following:
 - NVMe drive widths
 - Common REFCLK or separate REFCLK support
 - Maximum speeds
 - Designed slot power
- Supports cable order independence, that is, the drive LED control and slot ID are not dependent on cable order.
- Enables drive hot plug insertion through control of PERST# timing.

For existing SAS/SATA backplanes, if BP_TYPE = 0, the adapter uses SGPIO for legacy backplane management. Refer to the SFF-8485 specification for functionality details. Design new backplanes with the industry-standard SFF-TA-1005 (UBM) specification for backplane management.

Virtual Pin Port Management

Broadcom requires new designs to enable UBM for backplane management. The adapter maintains support for Virtual Pin Port (VPP) backplane management for legacy implementations. The adapters provide LED operation for NVMe devices based on the VPP over I²C definition. Standard VPP implementation calls for one PCA9555 target per two devices. For each drive pair, the adapter expects to see one PCA9555 target responding to address 0x40 on each pair of NVMe drives.

Sideband Signals

The internal adapters have one or two x8 SFF-8654 connectors. Each x8 connector provides two sets of sidebands. This section describes the sideband signal usage. The following table defines the sideband signal's pins on the SFF-8654 connector. The last column in the table indicates the strength of the pull-up resistor or pull-down resistor values on the adapter. See [Table 7, Sideband Management Pin Settings](#), for the signal descriptions, and see [Table 8, Internal x8 SFF-8654 Connector Pinout](#), for a complete connector pinout.

Table 6: Sideband Signal Pinout

Connector A Side	Connector B Side	Sideband or Vendor Specific Pin Number	UBM Assignments	Direction	Resistor Value
A8	A26	7	BP_TYPE	Input	100 kΩ pull-down
A9	A27	4	2W_RESET#	Output	2.0 kΩ pull-up

Connector A Side	Connector B Side	Sideband or Vendor Specific Pin Number	UBM Assignments	Direction	Resistor Value
A10	A28	3	GND	—	—
A11	A29	+	REFCLK+	Output	—
A12	A30	–	REFCLK-	Output	—
B8	B26	0	2W_CLK	Input/Output	2.0 kΩ pull-up
B9	B27	1	2W_DATA	Input/Output	2.0 kΩ pull-up
B10	B28	2	GND	—	—
B11	B29	5	PERST#	Input/Output	2.0 kΩ pull-up
B12	B30	6	C_TYPE, D_INPL#, CHANGE_DET#	Input/Output	10 kΩ pull-up

The following table describes the sideband signal pin settings.

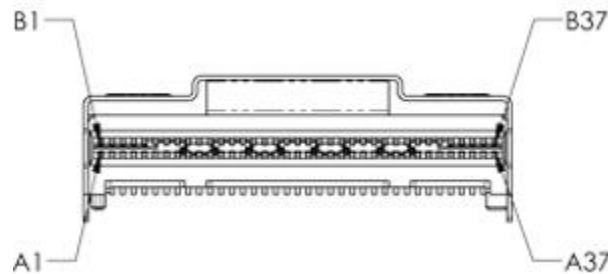
Table 7: Sideband Management Pin Settings

Pin Name	Settings	Description
BP_TYPE	<ul style="list-style-type: none"> 0: SGPIO 1: Two-wire interface 	Indicates if the backplane uses SGPIO or two-wire interface for management. To maintain backwards compatibility with SPGIO-based backplanes, the adapter has a weak pull-down to default to SGPIO if the backplane does not explicitly drive the signal.
2W_RESET#	<ul style="list-style-type: none"> 0: Reset is asserted 1: Reset is not asserted 	Optional reset driven by the host if the UBM target reports that the target can be reset.
REFCLK+/-	—	PCIe REFCLK HCSL 100-MHz clock driven by the device side ports to PCIe devices that require REFCLK. If D_INPL# is 0 and BP_TYPE is 1, the adapter enables the REFCLK outputs for that quad of high-speed lanes. When BP_TYPE is 0 or the UBM Clock Routing bit on the backplane is 0, this output is turned off.
2W_CLK	—	The two-wire interface clock signal.
2W_DATA	—	The two-wire interface data signal.
PERST#	<ul style="list-style-type: none"> 0: Reset is asserted 1: Reset is not asserted 	The adapter drives the PCIe RESET# signal. This signal uses a clamp to ground so that the signal on the adapter powers up LOW until backplane detection warrants the release of this signal for open-drain use. This method ensures that PERST# does not deassert until the directly connected NVMe drive is successfully detected.
C_TYPE, D_INPL#, CHANGE_DET#	—	Open collector/drain input or output signal. <ul style="list-style-type: none"> C_TYPE. If BP_TYPE is 0, the adapter drives this signal LOW. If BP_TYPE is 1, this signal adheres to the SFF-8448 requirement to drive this signal to 1 in response to floating the signal. Because this signal is an open drain signal, <i>driving</i> to 1 is when a pull-up resistor pulls this signal HIGH. D_INPL#. When C_TYPE is HIGH, the backplane pulls this signal to ground to indicate an NVMe device is connected and a two-wire interface backplane management target might be on the sideband's two-wire interface. CHANGE_DET#. If D_INPL# is 0 and a UBM FRU device is discovered on the two-wire interface, the UBM FRU data can inform the adapter that the device is CHANGE_DET# feature capable. The adapter can rely on this signal as the CHANGE_DET# signal as described in the UBM specification. In this mode, the UBM controller drives this signal LOW to assert CHANGE_DET#.

Cables and Cabling Configurations

The internal adapter follows the SFF-9402 standard for connector signal assignments. Each x8 connector includes eight PCIe transmit and receive lanes and two sets of sidebands designated as A and B, in accordance with the SFF-9402 specification. The following figure shows the x8 SFF-8654 pin designations.

Figure 1: x8 SFF-8654 Pin Designations



The following table defines the adapter's internal x8 SFF-8654 connector pinouts.

Table 8: Internal x8 SFF-8654 Connector Pinout

Pin	Name	Pin	Name
A1	GND	B1	GND
A2	PERp0, RX0+	B2	PETp0, TX0+
A3	PERn0, RX0-	B3	PETn0, TX0-
A4	GND	B4	GND
A5	PERp1, RX1+	B5	PETp1, TX1+
A6	PERn1, RX1-	B6	PETn1, TX1-
A7	GND	B7	GND
A8	BP_TYPEA	B8	2W-CLKA, SClockA
A9	2W_RESETA, SDataOutA	B9	2W-DATAA, SloadA
A10	GND	B10	GND
A11	REFCLKA+	B11	PERSTA#, SDataInA
A12	REFCLKA-	B12	CPRSNTA#, CNTRLR_TYPEA
A13	GND	B13	GND
A14	PERp2, RX2+	B14	PETp2, TX2+
A15	PERn2, RX2-	B15	PETn2, TX2-
A16	GND	B16	GND
A17	PERp3, RX3+	B17	PETp3, TX3+
A18	PERn3, RX3-	B18	PETn3, TX3-
A19	GND	B19	GND
A20	PERp0, RX4+	B20	PETp0, TX4+

Pin	Name	Pin	Name
A21	PERn0, RX4-	B21	PETn0, TX4-
A22	GND	B22	GND
A23	PERp1, RX5+	B23	PETp1, TX5+
A24	PERn1, RX5-	B24	PETn1, TX5-
A25	GND	B25	GND
A26	BP_TYPEB	B26	2W-CLKB, SClockB
A27	2W_RESETB, SDataOutB	B27	2W-DATAB, SLoadB
A28	GND	B28	GND
A29	REFCLKB+	B29	PERSTB#, SDataInB
A30	REFCLKB-	B30	CPRSNTB#, CNTRLR_TYPEB
A31	GND	B31	GND
A32	PERp2, RX6+	B32	PETp2, TX6+
A33	PERn2, RX6-	B33	PETn2, TX6-
A34	GND	B34	GND
A35	PERp3, RX7+	B35	PETp3, TX7+
A36	PERn3, RX7-	B36	PETn3, TX7-
A37	GND	B37	GND

Storage Interface Cabling

Choose the proper cable for the given backplane type and connectors. The correct choice is especially important for backplanes that use SFF-8643 for the NVMe connectors. Many of these backplanes use an older legacy-recommended pinout for the NVMe connector instead of a connector pinout based on the SFF-9402 specification. Most backplanes that use either SFF-8612 or SFF-8654 connectors follow the SFF-9402 specification. The pinout recommended in the *PCI Express OCUlink Specification* is equivalent to that recommended for SFF-9402. Verify the connector pinout for the intended backplane to make sure the proper cable is used when connecting to NVMe drives.

Broadcom provides the following cables to use for the adapter. Use the MPN listed to order a cable from Broadcom. If you source your own cables, use the Broadcom part number from the following table, and the drawings and pinouts in [Cable Drawings and Pinouts](#).

Table 9: Internal Adapter Cables

MPN	Broadcom Cable Part No.	Cable Description	Backplane Connector
05-60001-00	5067-6865	x8 8654 to 2x4 8612, AltWiring 1M	Two x4 SFF-8612 (OCuLink)
05-60002-00	5067-6862	x8 8654 to 2x4 8643 (W), SMC 1M	Two x4 SFF-8643 (mini-SAS HD)
05-60003-00	5067-6866	x8 8654 to 2x4 8643, 9402 SAS 1M	Two x4 SFF-8643 (mini-SAS HD)
05-60004-00	5067-6103	x8 8654 to 2x4 8654, 9402 1M	Two x4 SFF-8654 (SlimSAS)
05-60005-00	5067-6682	x8 8654 to 2xU.2 Direct, 1M	Two U.2 SFF-8639
05-60006-00	5067-7542	x8 8654 to 8xU.3 Direct, 1M	Eight U.3 SFF-8639
05-60007-00	5067-6869	x8 8654 to 1x8 8654, 9402 1M	One x8 SFF-8654 (SlimSAS)

Table 10: Adapter Broadcom Cable Use Cases

MPN	Type	Description
05-60001-00	SAS/SATA and NVMe	Use for backplanes with x4 SFF-8612 connectors with pinouts that follow the SFF-9402 specification.
05-60002-00	NVMe	Specialty cable that provides NVMe connections for SuperMicro Purley backplanes. This cable has white SFF-8643 connectors to indicate that it must connect to the white SFF-8643 connectors on the SuperMicro Purley backplanes.
05-60003-00	SAS/SATA	Use for traditional SAS/SATA connections. Usually backplanes designed to support SAS/SATA only or are double plumbed for U.2 and SAS/SATA drives use SFF-8643 connectors.
05-60004-00	SAS/SATA and NVMe	Use for backplanes with x4 SFF-8654 connectors with pinouts that follow the SFF-9402 specification.
05-60005-00	NVMe	Enables direct connect from the adapter to a U.2 NVMe drive. Use for proof-of-concept type applications.
05-60006-00	SAS/SATA and NVMe	Enables direct connect from the adapter to a U.3 NVMe or SAS/SATA drive. This cable does not send a PCIe REFCLK or PERST# to each drive connector; that is, the U.3 drive must support SRIS and not require PERST#. Use for proof-of-concept type applications.
05-60007-00	SAS/SATA and NVMe	Use for backplanes with x8 SFF-8654 connectors with pinouts that follow the SFF-9402 specification.

Backplane Connectors

The SFF-8612 or SFF-8654 connectors are the preferred connectors to use for the NVMe backplane or multiprotocol backplanes, based on the SFF-TA-1001 universal bay definition.

Backplanes that use OCUlink connectors should follow the *PCI Express OCUlink Specification*. This pinout is also equivalent to the SFF-9402 specification recommendations. Verify the backplane connector pinout to make sure you use proper cabling to the NVMe drive. Refer to the *PCI Express OCUlink Specification* and the SFF-9402 specification for backplane NVMe connector pinout information.

External Adapter Connector Pinout

External adapters support SAS and PCIe connections. The PCIe cable specification swaps lanes 0 and 1 compared to the SAS specification. For PCIe connections, this swap means the external pinout must place lanes 0 and 1 on the same pins as the JBOF. This swap does not impact SAS connections because lane ordering does not impact SAS designs.

For external PCIe JBOF connections, as defined by the *PCI Express External Cabling Specification*, the adapter does not connect REFCLK and PERST#. The adapter only supports an SRIS-capable endpoint, that is, no REFCLK. The JBOF handles the drive (connected to the JBOF switch) start-of-day reset, hot insertion, and clocking requirements.

The adapter expects a local (single master) two-wire bus connection to the cable or active module's EEPROM. A cable requires a local EEPROM on each end to identify cable properties, such as length, loss budget, ganging, and so on. The adapter supports no direct communication to the enclosure over two-wire. SES performs enclosure management.

The following table shows the cable pinout for the cable that Broadcom provides for the external adapter. See [Cable Drawings and Pinouts](#) for drawings and pinouts of each listed cable. Use the drawings if you source your own cables.

Table 11: External Adapter Cable Pinout

Pin	Signal	Pin	Signal
A1	No Connect	C1	CMICK
A2	CINT#	C2	CMIDAT
A3	GND	C3	GND
A4	PERp0, RX0+	C4	PETp0, TX0+
A5	PERn0, RX0-	C5	PETn0, TX0-
A6	GND	C6	GND
A7	PERp3, RX3+	C7	PETp3, TX3+
A8	PERn3, RX3-	C8	PETn3, TX3-
A9	GND	C9	GND
B1	PWR	D1	PWR
B2	CBLPRSNT#	D2	MGTPWR
B3	GND	D3	GND
B4	PERp1, RX1+	D4	PETp1, TX1+
B5	PERn1, RX1-	D5	PETn1, TX1-
B6	GND	D6	GND
B7	PERp2, RX2+	D7	PETp2, TX2+
B8	PERn2, RX2-	D8	PETn2, TX2-
B9	GND	D9	GND

Broadcom provides the following cable to use for external adapters. Use the MPN listed to order the cable from Broadcom. If you source your own cables, use the Broadcom part number from the following table, and the drawings and pinouts in [Cable Drawings and Pinouts](#).

Table 12: External Adapter Cable

MPN	Broadcom Cable Part No.	Cable Description	Backplane Connector
05-60009-00	5067-9643	G4/S4 x4 8644 to x4 8644, 3M	Two x4 SFF-8644

CacheVault Data Protection

The MegaRAID Tri-Mode storage adapters support data retention by using NAND flash memory down on the adapter, backed up by a CacheVault™ Power Module 05 (CVPM05).

The CVPM05 module is a super-capacitor pack that provides power for the backup of your data in case of host power loss or server failure. The CVPM05 module connects to the controller remotely by cable. The data is backed up to the NAND flash memory available on the MegaRAID storage adapter.

NOTE

If you do not use the remote mount board or clip included with the CacheVault kit, do not damage the CVPM05 module when mounting in the system. For more information on mounting the CVPM05 module, refer to *CVPM02, CVPM05 Power Modules | CVFM04 Cache Module MegaRAID CacheVault Protection Products User Guide*.

In the event of host power loss or server failure, any data available in the cache is offloaded to the onboard NAND memory. During this process, the CVPM05 power module powers the necessary components needed for offload.

NOTE

You cannot hot plug CVPM05 modules. Removing or inserting a CVPM05 module with the adapter powered on might damage the board and the super-capacitor functionality. To attach or remove a CVPM05 module from an adapter, you must fully power down the adapter before you attach the module to or remove the module from its mating connector.

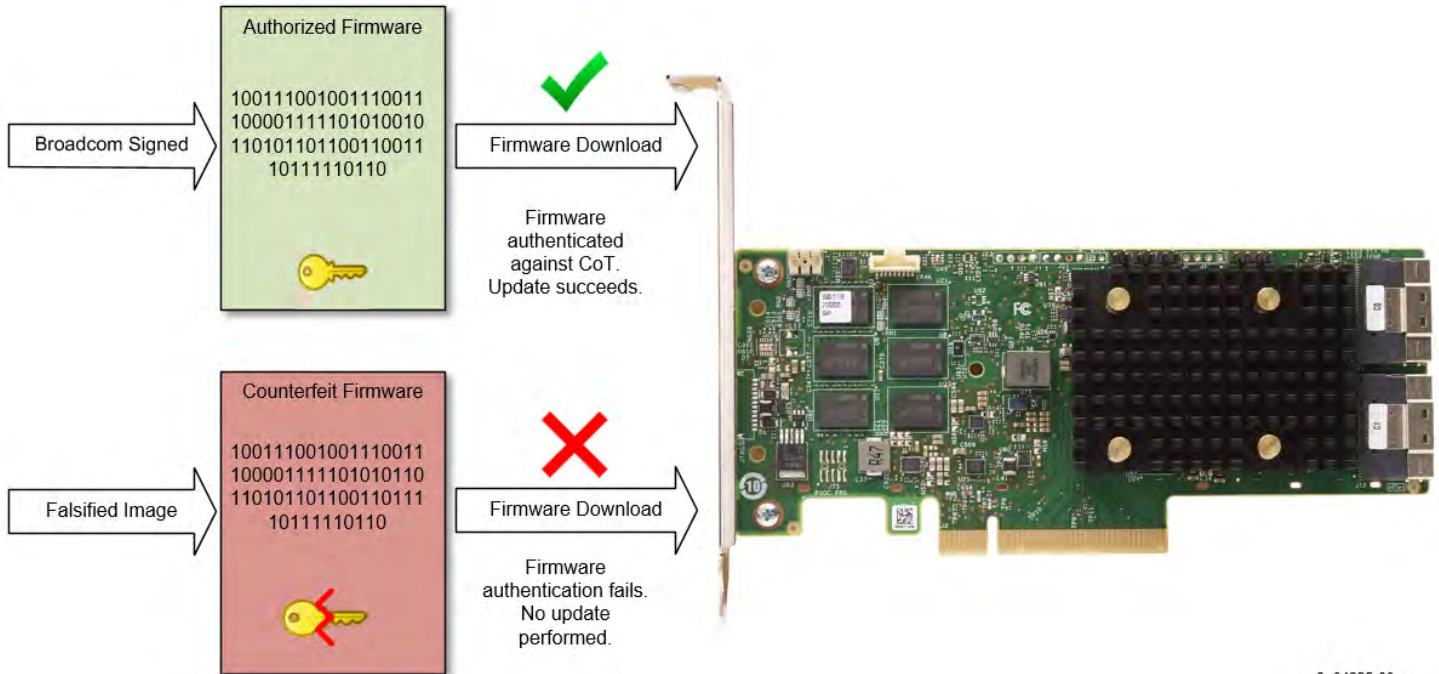
For more information on installation of the CVPM05 module, refer to the *CacheVault Power Module 05 Getting Started Guide* available at <http://www.broadcom.com/support/download-search>.

Adapter Security

The adapter hardware secure boot security feature protects your system from malicious activity.

Hardware secure boot permits only authenticated firmware to execute on the adapter. The adapter boots from an internal boot ROM, which establishes the initial root of trust (RoT). Hardware secure boot authenticates and builds a chain of trust (CoT) with succeeding firmware images by using the RoT, meaning only authorized firmware executes on the adapter.

Figure 2: Authenticated Firmware Example



3_04225-00

Hardware secure boot requires that each image be signed with a valid digital signature; otherwise, the image is considered invalid and does not execute. The adapter ships with a valid signed firmware image. All Broadcom-supplied firmware includes a valid digital signature; therefore, the hardware secure boot process is transparent unless the adapter encounters a counterfeit image. If the adapter downloads a counterfeit image, the image authentication fails and the download utility, such as StorCLI2, displays the appropriate failure messages. Contact Broadcom Technical Support for assistance.

Adapter Installation Instructions

This chapter provides detailed instructions on how to install your adapter. Make sure to use the proper installation steps for your adapter:

- [Adapter Installation Instructions](#): MegaRAID 9560-16i, MegaRAID 9560-8i, MegaRAID 9580-8i8e, MegaRAID 9540-8i, HBA 9500-16i, HBA 9500-8i, HBA 9500-16e, or HBA 9500-8e
- [OCP Adapter Installation Instructions](#): MegaRAID 9562-16i or HBA 9502-16i

Adapter Installation Instructions

Use the following steps to install any of the following adapters:

- MegaRAID 9560-16i
- MegaRAID 9560-8i
- MegaRAID 9580-8i8e
- MegaRAID 9540-8i
- HBA 9500-16i
- HBA 9500-8i
- HBA 9500-16e
- HBA 9500-8e

1. **Unpack your adapter.**

Unpack and remove the adapter. Inspect the adapter for damage. If it appears damaged, contact Broadcom Technical Support.

ATTENTION

To avoid the risk of data loss, back up your data before you change your system configuration.

2. **Turn off the power to the system.**

Turn off the power to the computer and disconnect the AC power cord. Remove the computer cover. Refer to the system documentation for instructions. Before you install the adapter, make sure that the computer is disconnected from the power and from any networks.



CAUTION

Disconnect the computer from the power supply and from any networks to which you will install the adapter, or you risk damaging the system or experiencing electrical shock.

3. **Review the adapter connectors.** See [Broadcom MegaRAID and HBA Tri-Mode Storage Adapter Characteristics](#) for descriptions of the adapters that show their connectors.

4. **Check the mounting bracket on the adapter.**

If required for your system, replace the full-profile mounting bracket that ships on the adapter with the low-profile bracket supplied. Complete the following steps to attach the low-profile bracket:

- a) Using a No. 1 Phillips screwdriver that is ESD safe, remove the two Phillips screws that connect the full-profile bracket to the board. Unscrew the two screws located at the top and bottom edges of the board. Avoid touching any board components with the screwdriver or the bracket.
- b) Remove the full-profile bracket. Do not damage the adapter.
- c) Place the adapter on top of the low-profile bracket. Position the bracket so that the screw holes in the tabs align with the openings in the board.
- d) Using a No. 1 Phillips torque screwdriver that is ESD safe, set to a maximum torque of 4.8 ± 0.5 inch-pounds. Replace the two Phillips screws removed in Step a.

ATTENTION

Exceeding this torque specification can damage the board, connectors, or screws, and can void the warranty on the board.

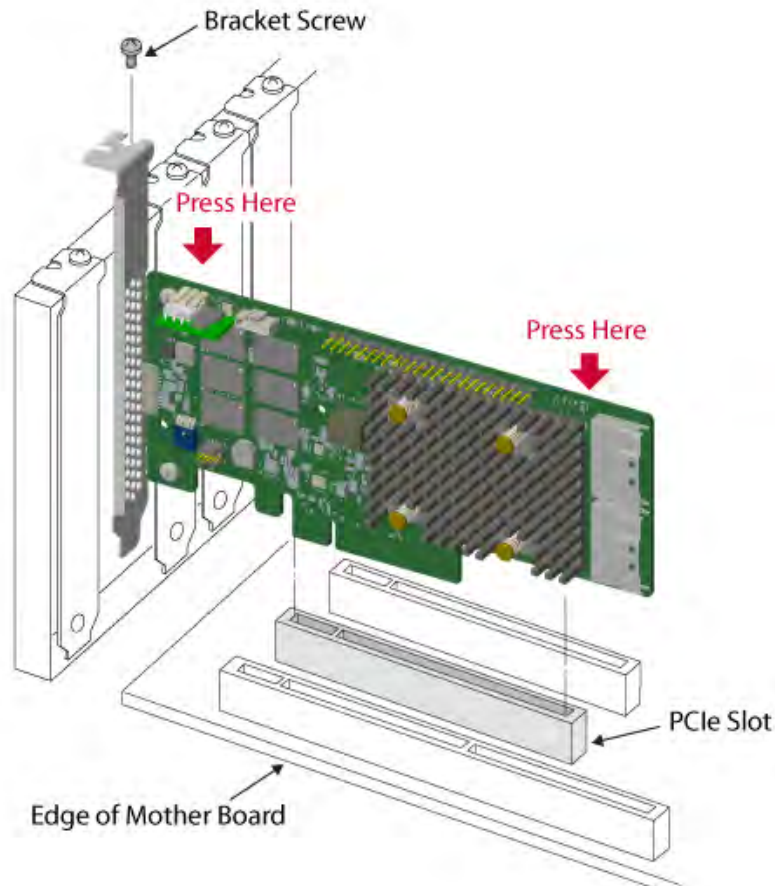
ATTENTION

Damage caused to the board as a result of changing the bracket can void the warranty on the board. Adapters returned without a bracket mounted on the board will be sent back without return merchandise authorization (RMA) processing.

5. **Insert the adapter into an available PCIe slot.** Select a PCIe slot, and align the adapter's PCIe bus connector to the slot, as shown in the following figure. Press down gently, but firmly, to make sure that the adapter is seated correctly in the slot. Secure the bracket to the computer chassis with the bracket screw.

NOTE

Adapters with a x8 host interface can operate in x8 or x16 slots. However, some x16 PCIe slots support only PCIe graphics cards; an adapter installed in one of these slots will not function. Refer to the guide for your motherboard for information about the PCIe slots.

Figure 3: Installing an Adapter in a PCIe Slot

6. Configure and install the SAS, SATA, and PCIe (NVMe) devices in the host computer case.

Refer to documentation for the devices for any preinstallation configuration requirements.

7. Connect the adapter to the devices. Connect the appropriate cable with the connectors on one end to connect to the adapter and the appropriate connector on the other end to attach to the backplane connector.

The maximum cable length is 1 meter (39.37 in.). A single wide-port SAS or multilane PCIe (NVMe) device cannot connect to phys controlled by different SAS cores or PDBs. See [Tri-Mode Storage Interface](#) for more information.

8. Provide the required airflow for the installed adapter. See [Operating and Nonoperating Conditions](#) to find the adapter's cooling requirements.

9. Turn on the power to the system. Reinstall the computer cover, and reconnect the AC power cords. Make sure that the power is turned on to the storage devices before or at the same time that the power is turned on to the host computer. Turn on power to the host computer. If the computer is powered on before these devices, the devices might not be recognized.

During boot, a BIOS message appears. The firmware takes several seconds to initialize. The configuration utility prompt times out after several seconds. The second portion of the BIOS message shows the adapter controller number, firmware version, and cache SDRAM size. The numbering of the adapters follows the PCIe slot scanning order used by the host motherboard.

10. **Choose the correct storage profile.** Refer to the *12Gb/s MegaRAID Tri-Mode Software User Guide* and *LSI® Storage Authority Software User Guide* for details about setting up your adapter.
11. **Install the operating system driver.** The adapters can operate under various operating systems. To operate under these operating systems, you must install the software drivers. The firmware and drivers are routinely updated and made available on the Support and Download center. Visit <http://www.broadcom.com/support/download-search>, and download the latest firmware and driver for the adapter.

The hardware installation of your adapter is complete.

OCP Adapter Installation Instructions

Use the following steps to install any of the following adapters:

- MegaRAID 9562-16i
- HBA 9502-16i

1. Unpack your adapter.

Unpack and remove the adapter. Inspect the adapter for damage. If it appears damaged, contact Broadcom Technical Support.

ATTENTION

To avoid the risk of data loss, back up your data before you change your system configuration.

2. Turn off the power to the system.

Turn off the power to the computer and disconnect the AC power cord. Remove the computer cover. Refer to the system documentation for instructions. Before you install the adapter, make sure that the computer is disconnected from the power and from any networks.

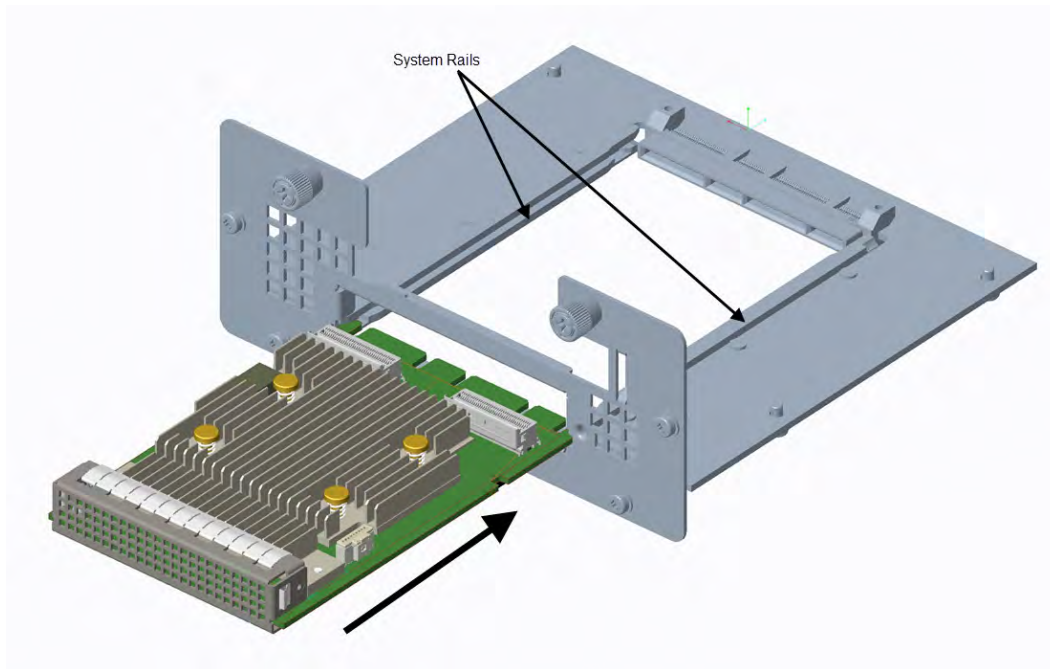


CAUTION

Disconnect the computer from the power supply and from any networks to which you will install the adapter, or you risk damaging the system or experiencing electrical shock.

3. **Insert the adapter into an available OCP 3.0 SFF slot.** Select an OCP slot, and align the adapter with the system rails and push the adapter into the slot, as shown in the following figure.

Figure 4: Installing an Adapter in an OCP Slot



4. **Secure the adapter.** Secured by the internal locking mechanism. A clicking sound is made when the adapter is secured into the slot. The internal locking mechanism depends on the server vendor. Adhere to the server vendor's instructions to engage the internal lock so the adapter is retained in the slot.
5. **Attach the cables.** Attach the cables to the storage device ports. When using the MegaRAID 9562-16i adapter, attach the SuperCap cable to the SuperCap cable latching connector.

Removing the OCP Adapter

Use the following steps to remove any of following adapters from an OCP slot:

- MegaRAID 9562-16i
- HBA 9502-16i

1. Turn off the power to the system.

Turn off the power to the computer and disconnect the AC power cord. Remove the computer cover. Refer to the system documentation for instructions. Before you install the adapter, make sure that the computer is disconnected from the power and from any networks.



CAUTION

Disconnect the computer from the power supply and from any networks to which you will install the adapter, or you risk damaging the system or experiencing electrical shock.

2. **Unplug the cables.** Remove the SlimSAS cables. When using the MegaRAID 9562-16i adapter, remove the SuperCap cable.

3. **Remove the adapter from the OCP slot.** Adhere to the server vendor's instructions to disengage the internal lock. To remove the adapter from the OCP slot, carefully apply even pressure to the inside edges of the bracket.

NOTE

Do not use the vertical SlimSAS connectors or heatsink on the adapter for leverage.

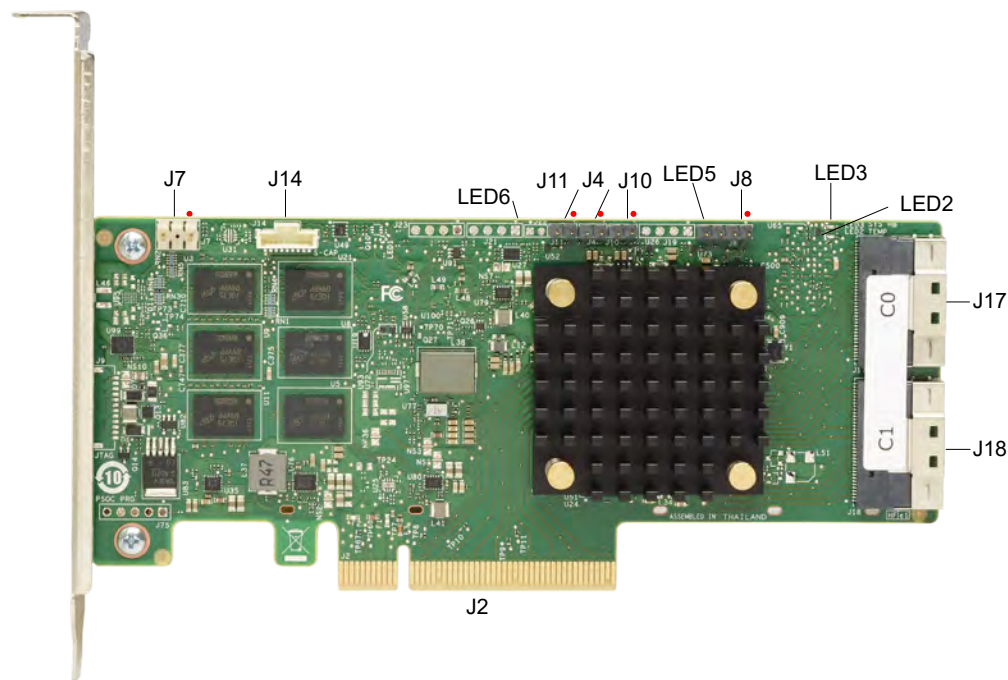
Broadcom MegaRAID and HBA Tri-Mode Storage Adapter Characteristics

MegaRAID 9560-16i Adapter – Connector and LED Designations

The adapter is a 155.52 (±0.13) mm × 68.77 (±0.13) mm board. The component height on the top and bottom of the adapter complies with the PCIe specification.

The following figure shows the connectors and LED locations on the adapter. A red circle near each header and connector identifies pin 1 in the figure.

Figure 5: Card Layout for the MegaRAID 9560-16i Tri-Mode Storage Adapter



The following table describes the headers and connectors on the adapter.

Table 13: Headers and Connectors

Connector	Type	Description
J2	Standard edge card connector	The interface between the storage adapter and the host system. With the PCIe interface, this connector provides power to the board and an I ² C interface connected to the I ² C bus for the Intelligent Platform Management Interface (IPMI).
J4	Default serial boot ROM (SBR) header	2-pin connector. Reserved for Broadcom use.

Connector	Type	Description
J7	Advanced software options hardware key header	2-pin connector. Enables support for selected advanced features.
J8	Onboard serial UART connector	4-pin connector. Reserved for Broadcom use.
J10	Global HDD activity LED header	2-pin connector. Connects to an LED that indicates activity on the drives connected to the adapter.
J11	Global drive fault LED header	2-pin connector. Connects to an LED that indicates whether a drive is in a fault condition.
J14	CacheVault power module interface	9-pin connector. Connects the adapter to a CacheVault power module.
J17, J18	Storage interface connectors	Two SFF-8654 8-port internal connectors. Connect the adapter by cable to the storage devices.

The following table describes the LEDs on the adapter.

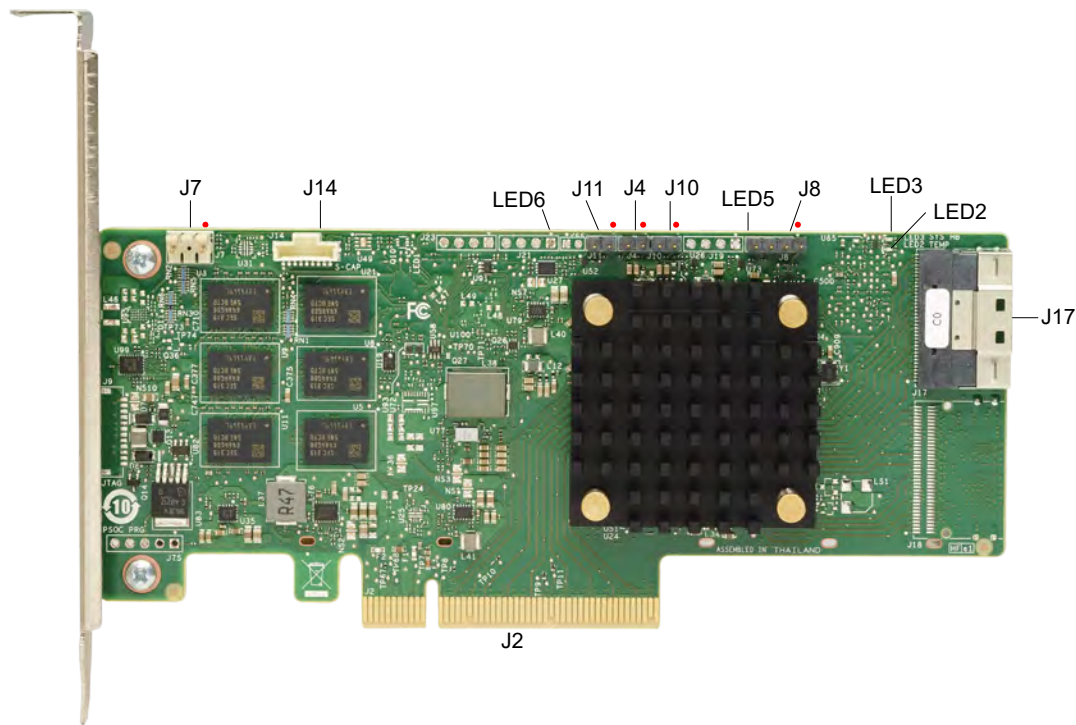
Table 14: LED Designations

LED	Type	Description
LED 2	Yellow controller over temperature	Stays on solid to indicate that the SAS3916 device temperature sensor is over the temperature threshold. When the device is in the proper temperature range, this LED is off.
LED 3	Green system heartbeat	Indicates that the SAS3916 RoC ASIC is operating normally. This LED blinks at 1 Hz.
LED 5	Yellow supercap fault	Indicates that the CacheVault power module is in a fault state or is over the temperature threshold. This LED resides on the non-heat-sink side of the board.
LED 6	Green ONFI activity	Indicates when the ONFI is active for cache offload or recovery. This LED resides on the non-heat-sink side of the board.

MegaRAID 9560-8i Adapter – Connector and LED Designations

The adapter is a 155.52 (±0.13) mm × 68.77 (±0.13) mm board. The component height on the top and bottom of the adapter complies with the PCIe specification.

The following figure shows the connectors and LED locations on the adapter. A red circle near each header and connector identifies pin 1 in the figure.

Figure 6: Card Layout for the MegaRAID 9560-8i Tri-Mode Storage Adapter**Table 15: Headers and Connectors**

Connector	Type	Description
J2	Standard edge card connector	The interface between the storage adapter and the host system. With the PCIe interface, this connector provides power to the board and an I ² C interface connected to the I ² C bus for the IPMI.
J4	Default SBR header	2-pin connector. Reserved for Broadcom use.
J7	Advanced software options hardware key header	2-pin connector. Enables support for selected advanced features.
J8	Onboard serial UART connector	4-pin connector. Reserved for Broadcom use.
J10	Global HDD activity LED header	2-pin connector. Connects to an LED that indicates activity on the drives connected to the controller.
J11	Global drive fault LED header	2-pin connector. Connects to an LED that indicates whether a drive is in a fault condition.
J14	CacheVault power module interface	9-pin connector. Connects the adapter to a CacheVault power module.
J17	Storage interface connector	One SFF-8654 8-port internal connector. Connects the adapter by cable to the storage devices.

The following table describes the LEDs on the adapter.

Table 16: LED Designations

LED	Type	Description
LED 2	Yellow controller over temperature	Stays on solid to indicate that the SAS3916 device temperature sensor is over the temperature threshold. When the device is in the proper temperature range, this LED is off.
LED 3	Green system heartbeat	Indicates that the SAS3916 RoC ASIC is operating normally. This LED blinks at 1 Hz.
LED 5	Yellow supercap fault	Indicates that the CacheVault power module is in a fault state or is over the temperature threshold. This LED resides on the non-heat-sink side of the board.
LED 6	Green ONFI activity	Indicates when the ONFI is active for cache offload or recovery. This LED resides on the non-heat-sink side of the board.

MegaRAID 9580-8i8e Adapter – Connector and LED Designations

The adapter is a 167.52 (± 0.13) mm \times 68.77 (± 0.13) mm board. The component height on the top and bottom of the adapter complies with the PCIe specification.

The following figure shows the connectors and LED locations on the adapter. A red circle near each header and connector identifies pin 1 in the figure.

Figure 7: Card Layout for the MegaRAID 9580-8i8e Tri-Mode Storage Adapter

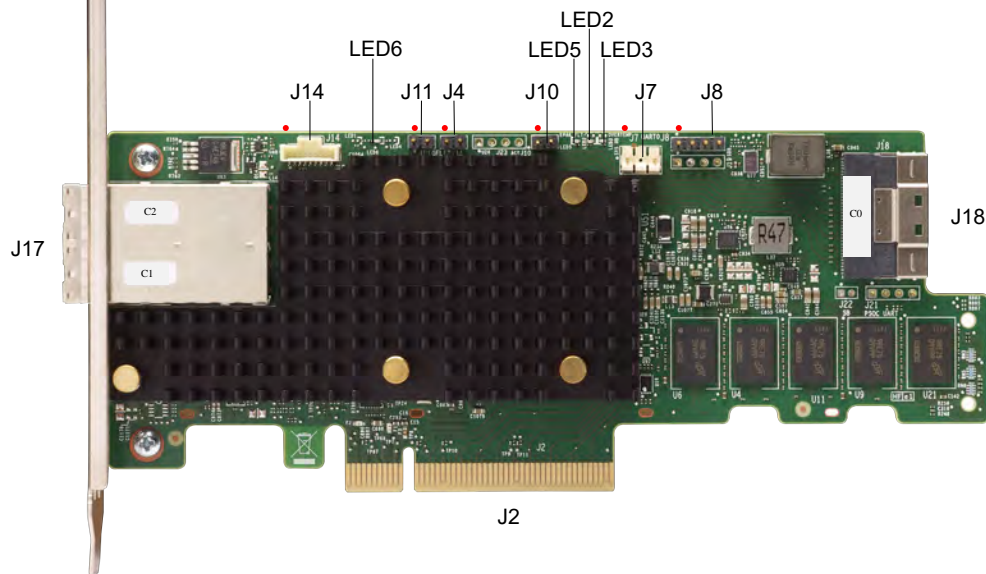


Table 17: Headers and Connectors

Connector	Type	Description
J2	Standard edge card connector	The interface between the storage adapter and the host system. With the PCIe interface, this connector provides power to the board and an I ² C interface connected to the I ² C bus for the IPMI.
J4	Default SBR header	2-pin connector. Reserved for Broadcom use.
J7	Advanced software options hardware key header	2-pin connector. Enables support for selected advanced features.
J8	Onboard serial UART connector	4-pin connector. Reserved for Broadcom use.
J10	Global HDD activity LED header	2-pin connector. Connects to an LED that indicates activity on the drives connected to the controller.
J11	Global drive fault LED header	2-pin connector. Connects to an LED that indicates whether a drive is in a fault condition.
J14	CacheVault power module interface	9-pin connector. Connects the adapter to a CacheVault power module.
J17	Storage interface connector	Two SFF-8644 4-port external connector. Connects the adapter by cable to the storage devices.
J18	Storage interface connector	One SFF-8654 8-port internal connector. Connects the adapter by cable to the storage devices.

The following table describes the LEDs on the adapter.

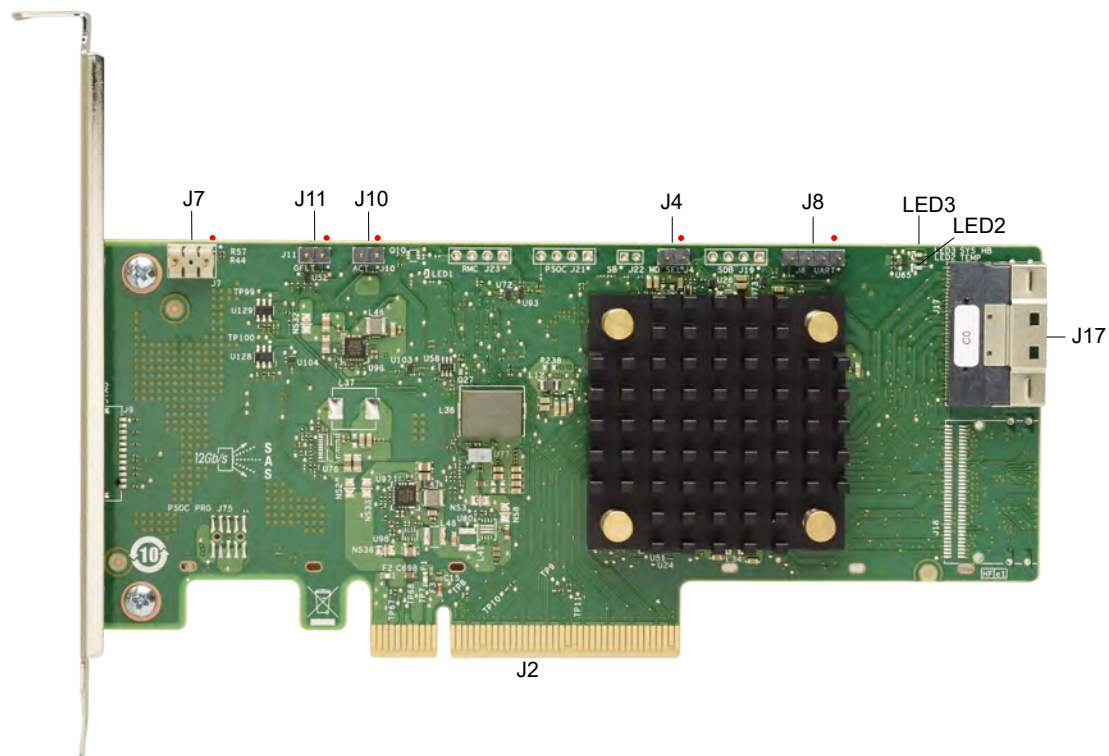
Table 18: LED Designations

LED	Type	Description
LED 2	Yellow controller over temperature	Stays on solid to indicate that the SAS3916 device temperature sensor is over the temperature threshold. When the device is in the proper temperature range, this LED is off.
LED 3	Green system heartbeat	Indicates that the SAS3916 RoC ASIC is operating normally. This LED blinks at 1 Hz.
LED 5	Yellow supercap fault	Indicates that the CacheVault power module is in a fault state or is over the temperature threshold.
LED 6	Green ONFI activity	Indicates when the ONFI is active for cache offload or recovery.

MegaRAID 9540-8i Adapter – Connector and LED Designations

The adapter is a 155.52 (±0.13) mm × 68.77 (±0.13) mm board. The component height on the top and bottom of the adapter complies with the PCIe specification.

The following figure shows the connectors and LED locations on the adapter. A red circle near each header and connector identifies pin 1 in the figure.

Figure 8: MegaRAID 9540-8i Tri-Mode Storage Adapter

The following table describes the headers and connectors on the adapter.

Table 19: Headers and Connectors

Connector	Type	Description
J2	Standard edge card connector	The interface between the storage adapter and the host system. With the PCIe interface, this connector provides power to the board and an I ² C interface connected to the I ² C bus for the IPMI.
J4	Default SBR header	2-pin connector. Reserved.
J7	Advanced software options hardware key header	2-pin connector. Enables support for selected advanced features.
J8	Onboard serial UART connector	4-pin connector. Reserved.
J10	Global HDD activity LED header	2-pin connector. Connects to an LED that indicates activity on the drives connected to the controller.
J11	Global drive fault LED header	2-pin connector. Connects to an LED that indicates whether a drive is in a fault condition.

Connector	Type	Description
J17	Storage interface connector	One SFF-8654 8-port internal connector. Connects the adapter by cable to the storage devices.

The following table describes the LEDs on the adapter.

Table 20: LED Designations

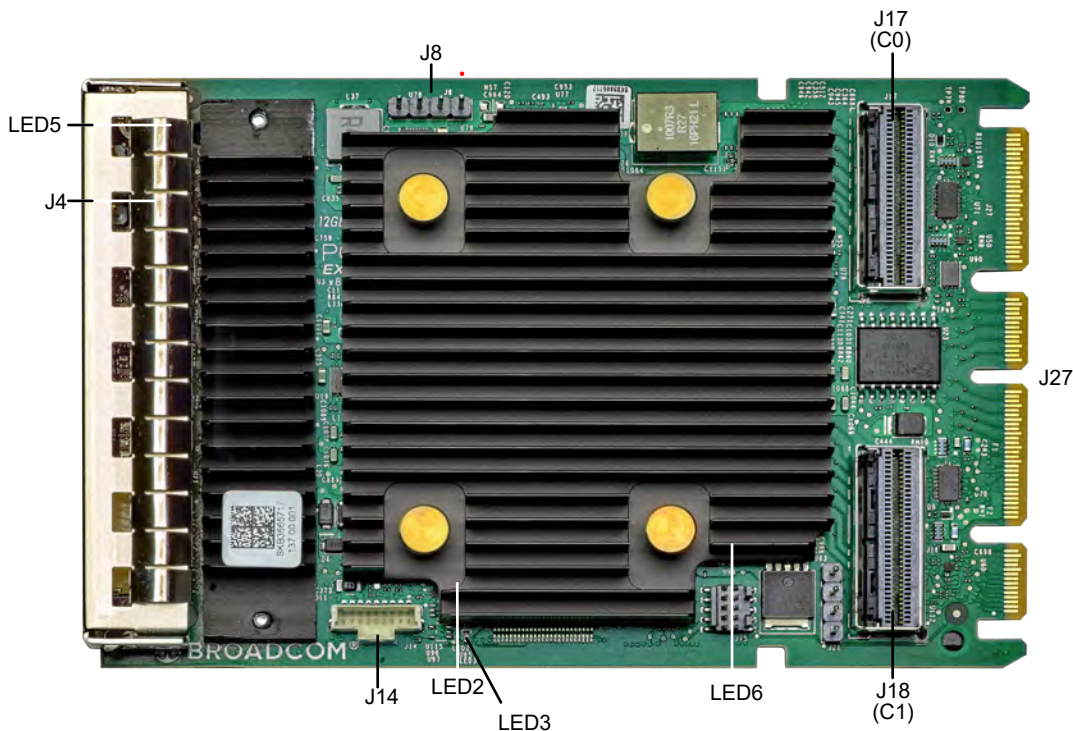
LED	Type	Description
LED 2	Yellow IOC over temperature	Stays on solid to indicate that the SAS3808 IOC temperature sensor is over the temperature threshold. When the IOC is in the proper temperature range, this LED is off.
LED3	Green system heartbeat	Indicates that the SAS3808 IOC is operating normally.

MegaRAID 9562-16i Adapter – Connector and LED Designations

The adapter is a 115.00 (± 0.13) mm × 76.00 (± 0.13) mm board. The component height on the top and bottom of the adapter complies with the OCP 3.0 NIC specification.

The following figure shows the connectors and LED locations on the adapter. A red circle near each header and connector identifies pin 1 in the figure.

Figure 9: Card Layout for the MegaRAID 9562-16i Tri-Mode Storage Adapter



The following table describes the headers and connectors on the adapter.

Table 21: Headers and Connectors

Connector	Type	Description
J4	Default serial boot ROM (SBR) header	2-pin connector. Reserved for Broadcom use.
J8	Onboard serial UART connector	4-pin connector. Reserved for Broadcom use.
J14	CacheVault power module interface	9-pin connector. Connects the adapter to a CacheVault power module.
J17, J18	Storage interface connectors	Two SFF-8654 8-port internal connectors. Connect the adapter by cable to the storage devices.
J27	Card PCIe edge connector	The interface between the storage adapter and the host system.

The following table describes the LEDs on the adapter.

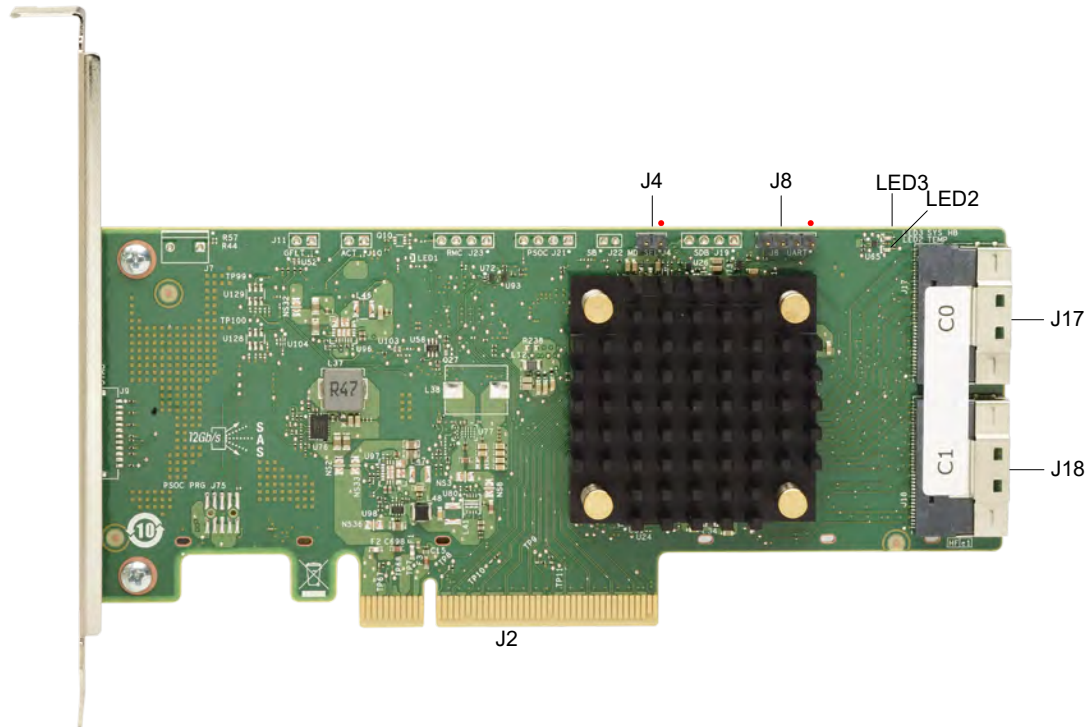
Table 22: LED Designations

LED	Type	Description
LED 2	Yellow controller over temperature	Stays on solid to indicate that the SAS3916 device temperature sensor is over the temperature threshold. When the device is in the proper temperature range, this LED is off.
LED 3	Green system heartbeat	Indicates that the SAS3916 RoC ASIC is operating normally. This LED blinks at 1 Hz.
LED 5	Yellow supercap fault	Indicates that the CacheVault power module is in a fault state or is over the temperature threshold. This LED resides on the non-heat-sink side of the board.
LED 6	Green ONFI activity	Indicates when the ONFI is active for cache offload or recovery. This LED resides on the non-heat-sink side of the board.

HBA 9500-16i Adapter – Connector and LED Designations

The adapter is a 155.52 (±0.13) mm × 68.77 (±0.13) mm board. The component height on the top and bottom of the adapter complies with the PCIe specification.

The following figure shows the connectors and LED locations on the adapter. A red circle near each header and connector identifies pin 1 in the figure.

Figure 10: Card Layout of the HBA 9500-16i Tri-Mode Storage Adapter

The following table describes the connectors on the adapter.

Table 23: Headers and Connectors

Connector	Type	Description
J2	Standard edge card connector	The interface between the storage adapter and the host system. With the PCIe interface, this connector provides power to the board and an I ² C interface connected to the I ² C bus for the IPMI.
J4	Default SBR header	2-pin connector. Reserved for Broadcom use.
J8	Onboard serial UART connector	4-pin connector. Reserved for Broadcom use.
J17, J18	Storage interface connectors	Two SFF-8654 8-port internal connectors. Connect the adapter by cable to the storage devices.

The following table describes the LEDs on the adapter.

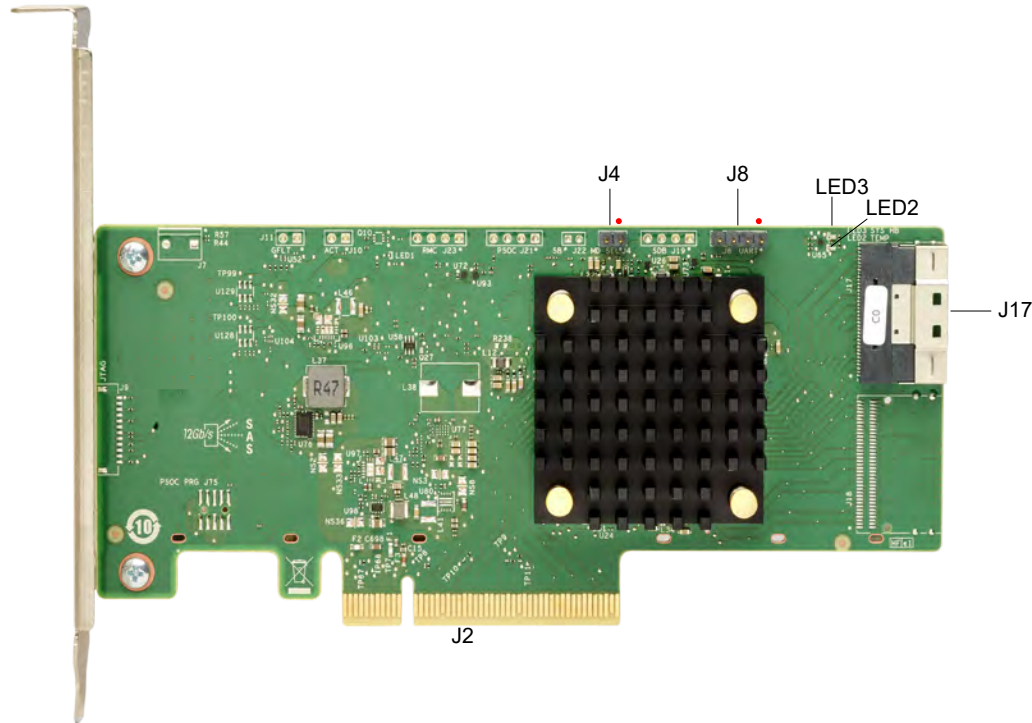
Table 24: LED Designations

LED	Type	Description
LED2	Yellow IOC over temperature	Stays on solid to indicate that the SAS3816 IOC temperature sensor is over the temperature threshold. When the device is in the proper temperature range, this LED is off.
LED3	Green system heartbeat	Indicates that the SAS3816 IOC is operating normally.

HBA 9500-8i Adapter – Connector and LED Designations

The adapter is a 155.52 (±0.13) mm × 68.77 (±0.13) mm board. The component height on the top and bottom of the adapter complies with the PCIe specification.

The following figure shows the connectors and LED locations on the adapter. A red circle near each header and connector identifies pin 1 in the figure.

Figure 11: Card Layout of the HBA SAS 9500-8i Tri-Mode Storage Adapter

The following table describes the headers and connectors on the adapter.

Table 25: Headers and Connectors

Connector	Type	Description
J2	Standard edge card connector	The interface between the storage adapter and the host system. With the PCIe interface, this connector provides power to the board and an I ² C interface connected to the I ² C bus for the IPMI.
J4	Default SBR header	2-pin connector. Reserved for Broadcom use.
J8	Onboard serial UART connector	4-pin connector. Reserved for Broadcom use.
J17	Storage interface connector	One SFF-8654 8-port internal connector. Connects the adapter by cable to the storage devices.

The following table describes the LEDs on the adapter.

Table 26: LED Designations

LED	Type	Description
LED2	Yellow IOC over temperature	Stays on solid to indicate that the SAS3808 IOC temperature sensor is over the temperature threshold. When the IOC is in the proper temperature range, this LED is off.
LED3	Green system heartbeat	Indicates that the SAS3808 IOC is operating normally.

HBA 9500-16e Adapter – Connector and LED Designations

The adapter is a 167.65 (± 0.13) mm × 68.77 (± 0.13) mm board. The component height on the top and bottom of the adapter complies with the PCIe specification.

The following figure shows the connectors and LED locations on the adapter. A red circle near each header and connector identifies pin 1 in the figure.

Figure 12: Card Layout of the HBA 9500-16e Storage Adapter

The following table describes the headers and connectors on the adapter.

Table 27: Connectors

Connector	Type	Description
J2	Standard board edge connector	PCIe x8 board edge connector. With the PCIe interface, this connector provides power to the board and an I ² C interface connected to the I ² C bus for the IPMI.
J18	Storage interface connectors	Four SFF-8644 external connectors. Connect the adapter by cable to the storage devices.
J4	Default SBR header	2-pin connector. Reserved for Broadcom use.
J8	Onboard serial UART connector	4-pin connector. Reserved for Broadcom use.

The following table describes the LEDs on the adapter.

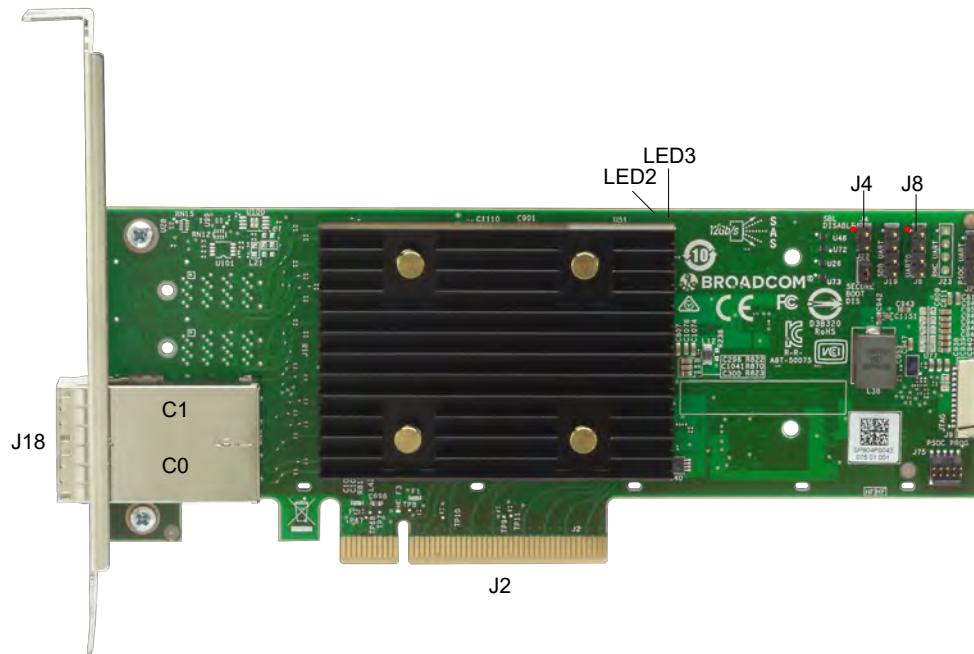
Table 28: LED Designations

LED	Type	Description
LED2	Yellow IOC over temperature	Stays on solid to indicate that the SAS3816 IOC temperature sensor is over the temperature threshold. When the device is in the proper temperature range, this LED is off. This LED resides on the non-heat-sink side of the board.
LED3	Green system heartbeat	Indicates that the SAS3816 IOC is operating normally. This LED resides on the non-heat-sink side of the board.

HBA 9500-8e Adapter – Connector and LED Designations

The adapter is a 167.65 (± 0.13) mm × 68.77 (± 0.13) mm board. The component height on the top and bottom of the adapter complies with the PCIe specification.

The following figure shows the connectors and LED locations on the adapter. A red circle near each header and connector identifies pin 1 in the figure.

Figure 13: Card Layout of the HBA 9500-8e Storage Adapter

The following table describes the headers and connectors on the adapter.

Table 29: Headers and Connectors

Connector	Type	Description
J2	Standard board edge connector	PCIe x8 board edge connector. With the PCIe interface, this connector provides power to the board and an I ² C interface connected to the I ² C bus for the IPMI.
J18	Storage interface connectors	Two SFF-8644 external connectors. Connect the adapter by cable to the storage devices.
J4	Default SBR header	2-pin connector. Reserved for Broadcom use.
J8	Onboard serial UART connector	4-pin connector. Reserved for Broadcom use.

The following table describes the LEDs on the adapter.

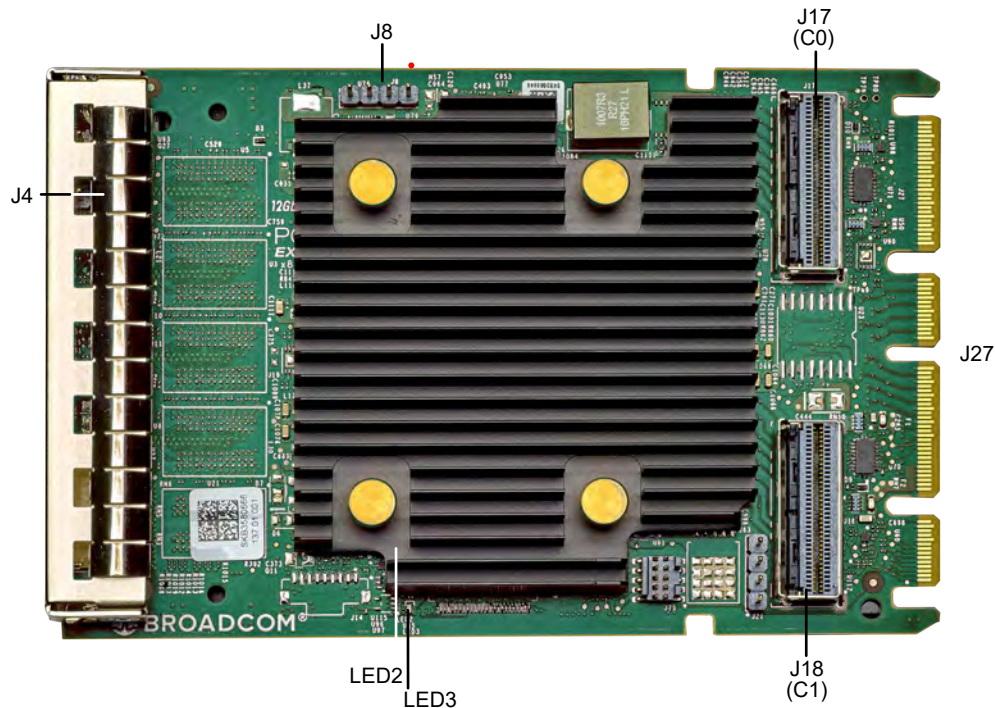
Table 30: LED Designations

LED	Type	Description
LED2	Yellow IOC over temperature	Stays on solid to indicate that the SAS3816 IOC temperature sensor is over the temperature threshold. When the device is in the proper temperature range, this LED is off. This LED resides on the non-heat-sink side of the board.
LED3	Green system heartbeat	Indicates that the SAS3816 IOC is operating normally. This LED resides on the non-heat-sink side of the board.

HBA 9502-16i Adapter – Connector and LED Designations

The adapter is a 115.00 (± 0.13) mm × 76.00 (± 0.13) mm board. The component height on the top and bottom of the adapter complies with the OCP 3.0 NIC specification.

Figure 14: Card Layout of the HBA 9502-16i Tri-Mode Storage Adapter



The following table describes the connectors on the adapter.

Table 31: Headers and Connectors

Connector	Type	Description
J4	Default serial boot ROM (SBR) header	2-pin connector. Reserved for Broadcom use.
J8	Onboard serial UART connector	4-pin connector. Reserved for Broadcom use.
J17, J18	Storage interface connectors	Two SFF-8654 8-port internal connectors. Connect the adapter by cable to the storage devices.
J27	Card PCIe edge connector	The interface between the storage adapter and the host system.

The following table describes the LEDs on the adapter.

Table 32: LED Designations

LED	Type	Description
LED2	Yellow controller over temperature	Stays on solid to indicate that the SAS3816 device temperature sensor is over the temperature threshold. When the device is in the proper temperature range, this LED is off.
LED3	Green system heartbeat	Indicates that the SAS3816 IOC ASIC is operating normally. This LED blinks at 1 Hz.

Tri-Mode Storage Adapter Technical Specifications

Operating and Nonoperating Conditions

The following table lists the operating (thermal and atmospheric) conditions and non-operating (such as storage and transit) environment for the storage adapters. The minimum airflow, measured as linear feet per minute (LFPM) at 55°C, must be met to avoid operating the controller's processor and board components above their maximum junction temperatures.

Table 33: Operating and Non-operating Conditions

Adapter	Operating Conditions			Non-operating Environment	
	Relative Humidity Range (Non-condensing)	Minimum LFPM	Temperature Range ^a	Relative Humidity Range (Non-condensing)	Temperature Range
9560-16i	5% to 90%	200	0°C to +55°C	5% to 95%	-40°C to +70°C
9560-8i	5% to 90%	200	0°C to +55°C	5% to 95%	-40°C to +70°C
9580-8i8e	5% to 90%	200	0°C to +55°C	5% to 95%	-40°C to +70°C
9540-8i	5% to 90%	150	0°C to +55°C	5% to 95%	-40°C to +70°C
9500-16i	5% to 90%	150	0°C to +55°C	5% to 95%	-40°C to +70°C
9500-8i	5% to 90%	150	0°C to +55°C	5% to 95%	-40°C to +70°C
9500-16e	5% to 90%	150	0°C to +55°C	5% to 95%	-40°C to +70°C
9500-8e	5% to 90%	150	0°C to +55°C	5% to 95%	-40°C to +70°C
9562-16i	5% to 90%	200	0°C to +55°C	5% to 95%	-40°C to +70°C
9502-16i	5% to 90%	150	0°C to +55°C	5% to 95%	-40°C to +70°C

Tri-Mode Storage Adapter Power Supply Requirements

All power is supplied to the tri-mode storage adapter through the PCIe 3.3V rails (3.3V ±9%) and the 12V rail (12V ±8%). Onboard switching regulator circuitry operates from the 3.3V rails and the 12V rail provides the necessary voltages.

Typical power is measured with maximum I/O traffic, typical silicon process material, and nominal voltages operating the card at an ambient temperature of 45°C with required airflow.

MegaRAID Tri-Mode Storage Adapter Power Supply Requirements

The following table describes the typical power consumption of the MegaRAID adapters.

Table 34: MegaRAID Tri-Mode Storage Adapter Typical Power Consumption

Power Mode	Typical Power (W)			
	9560-16i	9560-8i	9580-8i8e	9540-8i
3.3V Supply	0.22	0.22	0.66	0.02
+12V Supply	12.99	9.42	13.59	5.94

a. For adapters with a CVPM, this range applies with or without the CVPM attached.

Power Mode	Typical Power (W)			
	9560-16i	9560-8i	9580-8i8e	9540-8i
Total Power	13.21	9.64	14.25	5.96

During the transparent learn cycle, the CacheVault power module consumes up to an additional 8W. The PCIe 3.3V rail supplies the power for the learn cycle.

HBA Tri-Mode Storage Adapter Power Supply Requirements

The following table describes the typical power consumption of the HBAs.

Table 35: HBA Tri-Mode Storage Adapter Typical Power Consumption

Power Mode	Typical Power (W)			
	9500-16i	9500-8i	9500-16e	9500-8e
3.3V Supply	0.04	0.02	0.04	0.02
+12V Supply	8.5	5.94	8.70	6.10
Total Power	8.5	5.96	8.74	6.12

MegaRAID and HBA Tri-Mode OCP Adapter Power Supply Requirements

The following table describes the typical power consumption of the OCP adapters.

Table 36: OCP Tri-Mode Storage Adapter Typical Power Consumption

Power Mode	Typical Power (W)	
	9562-16i	9502-16i
3.3V Supply	0.3	0.1
+12V Supply	13.5	8.9
Total Power	13.8	9.0

For the MegaRAID 9562-16i adapter, the CacheVault power module consumes up to an additional 8W during the transparent learn cycle. The PCIe 3.3V rail supplies the power for the learn cycle.

Marks, Certifications, Compliance, and Safety Characteristics



Marks, Certifications, and Compliance







The design and implementation of the adapters minimize electromagnetic emissions, susceptibility to radio frequency energy, and the effects of electrostatic discharge. The following adapters show the marks and certifications included in [Table 38, Adapter Marks and Certifications](#).


Table 37: Adapter Models

Adapter	Model Number
MegaRAID 9560-16i MegaRAID 9560-8i	50077
HBA 9500-16i HBA 9500-8i	2022 and forward: 50134 Previous years: 50077
MegaRAID 9540-8i	50134
MegaRAID 9580-8i8e	50076
HBA 9500-16e HBA 9500-8e	50075
MegaRAID 9562-16i HBA 9502-16i	50137

Table 38: Adapter Marks and Certifications

Mark	Symbol	Description
Australia and New Zealand RCM		Meets the following standards: <ul style="list-style-type: none"> AS/NZS CISPR 32 CISPR 32:2015, Class B AS/NZS CISPR 32:2015, Class B
Canada EMC	CANADA ICES-003 CLASS B CANADA NMB-003 CLASSE B CAN ICES-3 (B)/NMB-3 (B)	Meets the following standards: <ul style="list-style-type: none"> ICES-003:2016 Issue 6: 2016, Class B CAN/CSA CISPR 22-10 CISPR 22:2008
Europe (CE)		Meets the following standards: <ul style="list-style-type: none"> EN 55022/EN 55024 EN 55032 EN 55032:2015 +AC:2016, Class B EN 50022:2010 +AC:2011, Class B EN 55024:2010 +A1:2015

Mark	Symbol	Description
Korea (RRL)	 MSIP-REM-A8T-XXXXX	xxxxx = model number Meets the KN32/KN35 testing requirements.
Taiwan (BSMI)	 D3B320 RoHS	Meets the following standards: <ul style="list-style-type: none"> • CNS 13438 • CNS15663
USA / Canada Safety (UL Listed)	 	For use with UL listed ITE equipment only. Meets the following standards: <ul style="list-style-type: none"> • UL 60950-1, 2nd Edition, 2014-10-14 (Information Technology Equipment - Safety -Part 1: General Requirements) • CAN/CSA C22.2 No. 60950-1-07, 2nd Edition, 2014-10 (Information Technology Equipment -Safety -Part 1: General Requirements) • UL 62368-1, Second Edition • CAN/CSA C22.2 No. 62368-1-14
CB Scheme Safety	—	Meets the following standards: <ul style="list-style-type: none"> • IEC 60950-1:2005 (Second edition) + Am 1:2009 + Am 2:2013 • EN 60950-1: 2006 + A11: 2009 + A1: 2010 + A12: 2011 + A2: 2013 • IEC 62368-1:2014 (Second edition) • EN 62368-1:2014+A11: 2017
Japan (VCCI)		Meets the following standards: <ul style="list-style-type: none"> • V-3/2015.04, Class B • V-4/2012.04 • VCCI-CISPR 32:2016 • CISPR 32:2015
USA / Canada (FCC)		Meets the following standards: <ul style="list-style-type: none"> • 47 CFR FCC Part 15, Subpart B, Class B • ANSI C63.4:2014 • CISPR 32:2008

Mark	Symbol	Description
Morocco (CMIM)		Meets the following standards: <ul style="list-style-type: none"> • EN 55022/EN 55024 EN 55032 • EN 55032:2015 +AC:2016, Class B • EN 50022:2010 +AC:2011, Class B • EN 55024:2010 +A1:2015
Country of Origin	Made in XXXX	XXXX indicates the country of origin.

FCC Compliance

This device complies with part 15 of the FCC Rules. Operation is subject to the following two conditions: (1) this device may not cause harmful interference, and (2) this device must accept any interference received, including interference that may cause undesired operation.

NOTE

This equipment has been tested and found to comply with the limits for a Class A digital device, pursuant to part 15 of the FCC Rules. These limits are designed to provide reasonable protection against harmful interference when the equipment is operated in a commercial environment. This equipment generates, uses, and can radiate radio frequency energy and, if not installed and used in accordance with the instruction manual, may cause harmful interference to radio communications. Operation of this equipment in a residential area is likely to cause harmful interference in which case the user will be required to correct the interference at his own expense.

Safety Characteristics

All tri-mode storage adapters meet or exceed the requirements of UL flammability rating 94 V0. Each bare board is also marked with the supplier name or trademark, type, and UL flammability rating. For the boards installed in a PCIe bus slot, all voltages are lower than the SELV 42.4V limit.

VCCI – Japan

この装置は、クラスA機器です。この装置を住宅環境で使用すると電波妨害を引き起こすことがあります。この場合には使用者が適切な対策を講ずるよう要求されることがあります。

VCCI – A

This is a Class A product. In a domestic environment this product may cause radio interference in which case the user may be required to take adequate measures. VCCI—A.

Cable Drawings and Pinouts

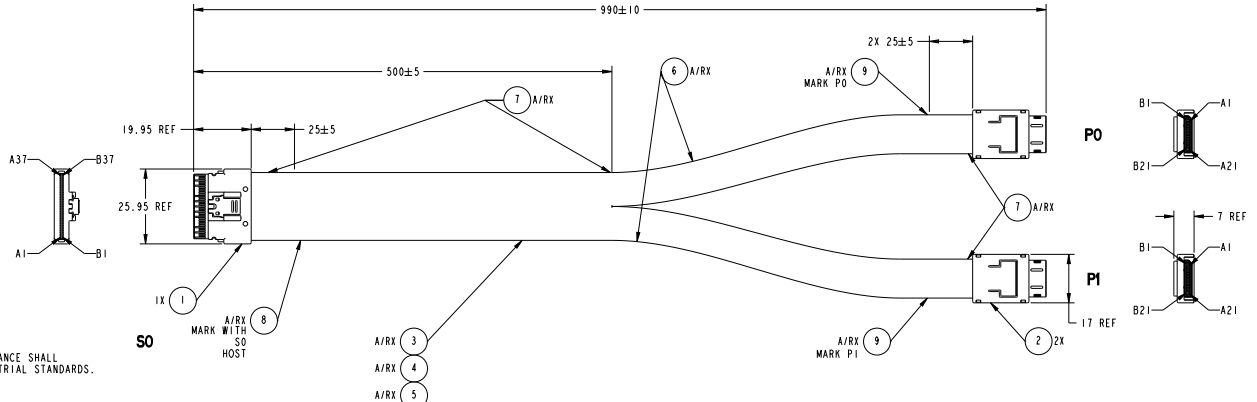
Use the cable drawings and pinouts in this appendix if your design requires you to design your own cables.

Cable 05-60001-00

The following figure shows the drawing and pinout for Broadcom cable, 05-60001-00, a x8 SFF-8654 to 2 x4 SFF-8612 connection.

Figure 15: Cable 05-60001-00 Drawing and Pinout

REVISIONS				
REV	ECO	DESCRIPTION	DATE	APPROVED
001		PRELIMINARY RELEASE	26FEB18	
002	175141	UPDATE WIRE GAUGE AND IMPEDANCE TOLERANCE ITEM 3, REVISE MARKING REQUIREMENTS NOTE 3.	21NOV19	



- NOTES:**
- DRAWING NOT TO SCALE.
 - ELECTRICAL AND MECHANICAL PERFORMANCE SHALL MEET PCIe GEN 4 AND SAS 4.0 INDUSTRIAL STANDARDS.
 - MARK LABEL (ITEM 8) WITH:
SLIMSAS Y (PCIe)
BROADCOM PART NUMBER
BROADCOM REVISION-XXX
DATE CODE DD/MM/YY
SECONDARY MARKING WITH MANUFACTURER PART NUMBER AND REVISION ACCEPTABLE.
 - SEE CABLE WIRING TABLE AND RELATED NOTES.

ITEM	CALLOUT	DESCRIPTION	QUANTITY	NOTES
9	LABEL	LABEL, 40X14MM, WHITE, R2, HF	A/R	
8	LABEL	LABEL, 70X28MM, WHITE, R2, HF	A/R	SEE NOTE 3
7	TAPE	ACETATE TAPE: W=1 INCH	A/R	
6	SLEEVING	EXPANDO TUBE: OD=7MM, GREEN, VW-1, HF	A/R	
5	SLEEVING	EXPANDO TUBE: OD=10MM, GREEN, VW-1, HF	A/R	
4	WIRE	UL1061, STRANDED	A/R	SEE NOTE 4
3	CABLE	SAS CABLE: UL20744, 28-32AWG, 92.5(2) ±10% DIFF, SAS4, PCIe GEN 4, VW-1, NATURAL, HF	A/R	
2	CONNECTOR	SFF-8612, 42P, STRAIGHT, ACTIVE LATCH, X4, SAS 4.0, PCIe GEN 4	2	SEE NOTE 4
1	CONNECTOR	SFF-8654, 74P, STRAIGHT, X8, SAS 4.0, PCIe GEN 4	1	SEE NOTE 4

APPROVALS	DATE	UNLESS OTHERWISE SPECIFIED, DIMENSIONS ARE IN MILLIMETERS.	BROADCOM®			
DESIGNED BY	06FEB18	TOLERANCES: 1. X ± 0.2 MM 2. XX ± 0.15 MM 3. XXX ± 0.500 MM ANGLES ±	TITLE: CABLE, SFF-8654 X8 TO 2X SFF-8612 X4, PCIe, 1M SCALE: 1.500 SIZE: D DWG NO.: 5067-6865 REV: 002 SHEET:			
APPROVED BY	26FEB18					

CONNECTOR	SIGNAL	CONNECTOR	PIN/PAD	CONNECTOR	PIN/PAD	CONNECTOR	SIGNAL	WIRE/CABLE	NOTES
NC		SO HOST	A1	P0 BACKPLANE	B1	NC			
GND			A2		B2	GND	ITEM 3		
Rx0+			A3		B3	Tx0+	ITEM 3		
Rx0-			A4		B4	Tx0-	ITEM 3		
GND			A5		B5	GND	ITEM 3		
Rx1+			A6		B6	Tx1+	ITEM 3		
Rx1-			A7		B7	Tx1-	ITEM 3		
GND			A8		B8	GND	ITEM 3		
SB7A						NC		NOTE 2	
SB4A			A9		B10	CWAKE#	ITEM 4	NOTE 1	
SB3A			A10		B9	CBL_ID	ITEM 4	NOTE 1	
SB3A			A10		B11	GND	ITEM 3		
SBA+			A11		B12	REFCLK+	ITEM 3		
SBA-			A12		B13	REFCLK-	ITEM 3		
GND			A13		B14	GND	ITEM 3		
Rx2+			A14		B15	Tx2+	ITEM 3		
Rx2-			A15		B16	Tx2-	ITEM 3		
GND			A16		B17	GND	ITEM 3		
Rx3+			A17		B18	Tx3+	ITEM 3		
Rx3-		A18	B19	Tx3-	ITEM 3				
GND		A19	B20	GND	ITEM 3				
NC			B21	NC					
NC			A1	NC					
GND		B1	A2	GND	ITEM 3				
Tx0+		B2	A3	Rx0+	ITEM 3				
Tx0-		B3	A4	Rx0-	ITEM 3				
GND		B4	A5	GND	ITEM 3				
Tx1+		B5	A6	Rx1+	ITEM 3				
Tx1-		B6	A7	Rx1-	ITEM 3				
GND		B7	A8	GND	ITEM 3				
SB0A		B8	A9	SCL	ITEM 4	NOTE 1			
SB1A		B9	A10	SDA	ITEM 4	NOTE 1			
SB2A		B10	A11	GND	ITEM 3				
SB5A		B11	A12	PERST#	ITEM 3				
SB6A		B12	A13	D_INPL#	ITEM 3				
GND		B13	A14	GND	ITEM 3				
Tx2+		B14	A15	Rx2+	ITEM 3				
Tx2-		B15	A16	Rx2-	ITEM 3				
GND		B16	A17	GND	ITEM 3				
Tx3+		B17	A18	Rx3+	ITEM 3				
Tx3-		B18	A19	Rx3-	ITEM 3				
GND		B19	A20	GND	ITEM 3				
NC			A21	NC					

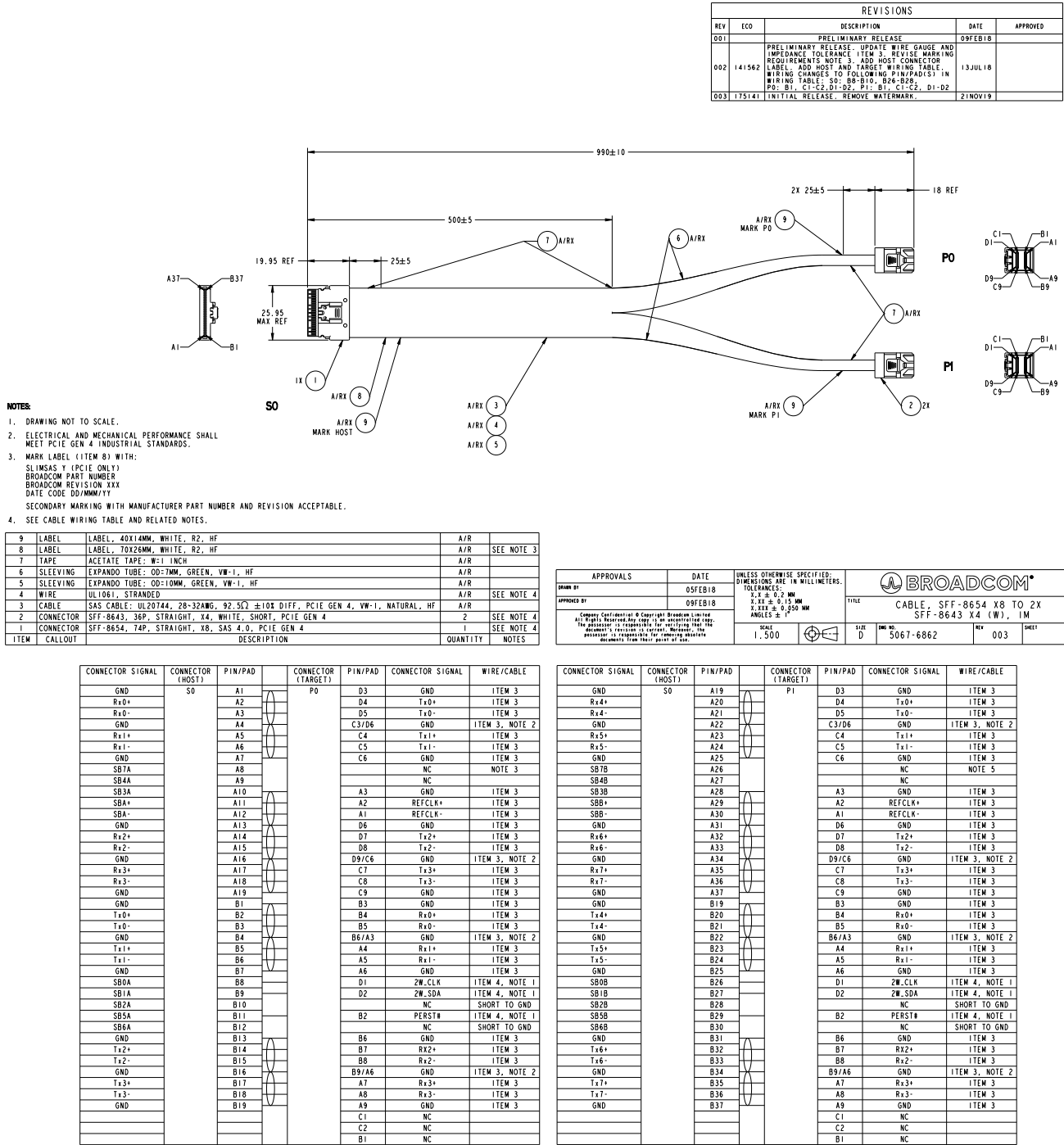
CONNECTOR	SIGNAL	CONNECTOR	PIN/PAD	CONNECTOR	PIN/PAD	CONNECTOR	SIGNAL	WIRE/CABLE	NOTES
NC		SO HOST	A19	P1 BACKPLANE	B1	NC			
GND			A20		B2	GND	ITEM 3		
Rx4+			A21		B3	Tx0+	ITEM 3		
Rx4-			A22		B4	Tx0-	ITEM 3		
GND			A23		B5	GND	ITEM 3		
Rx5+			A24		B6	Tx1+	ITEM 3		
Rx5-			A25		B7	Tx1-	ITEM 3		
GND			A26		B8	GND	ITEM 3		
SB7B			A27			NC		NOTE 3	
SB4B			A28		B10	CWAKE#	ITEM 4	NOTE 1	
SB3B			A29		B9	CBL_ID	ITEM 4	NOTE 1	
SB3B			A30		B11	GND	ITEM 3		
SB0+			A31		B12	REFCLK+	ITEM 3		
SB-			A32		B13	REFCLK-	ITEM 3		
GND			A33		B14	GND	ITEM 3		
Rx6+			A34		B15	Tx2+	ITEM 3		
Rx6-			A35		B16	Tx2-	ITEM 3		
GND			A36		B17	GND	ITEM 3		
Rx7+			A37		B18	Tx3+	ITEM 3		
Rx7-					B19	Tx3-	ITEM 3		
GND					B20	GND	ITEM 3		
NC					B21	NC			
NC					A1	NC			
GND			B19		A2	GND	ITEM 3		
Tx4+			B20		A3	Rx0+	ITEM 3		
Tx4-			B21		A4	Rx0-	ITEM 3		
GND			B22		A5	GND	ITEM 3		
Tx5+			B23		A6	Rx1+	ITEM 3		
Tx5-			B24		A7	Rx1-	ITEM 3		
GND			B25		A8	GND	ITEM 3		
SB0B			B26		A9	SCL	ITEM 4	NOTE 1	
SB1B			B27		A10	SDA	ITEM 4	NOTE 1	
SB2B			B28		A11	GND	ITEM 3		
SB5B			B29		A12	PERST#	ITEM 3		
SB6B			B30		A13	D_INPL#	ITEM 3		
GND			B31		A14	GND	ITEM 3		
Tx6+			B32		A15	Rx2+	ITEM 3		
Tx6-		B33	A16	Rx2-	ITEM 3				
GND		B34	A17	GND	ITEM 3				
Tx7+		B35	A18	Rx3+	ITEM 3				
Tx7-		B36	A19	Rx3-	ITEM 3				
GND		B37	A20	GND	ITEM 3				
NC			A21	NC					

- NOTES:**
- END TO END RESISTANCE OF INDICATED CONNECTION SHALL BE 750 MILLIOHM MAX.
 - SHORT PIN/PAD S0-A8 TO S0-B9. NO DIRECT CONNECT S0-A8 TO CONNECTOR P0.
 - SHORT PIN/PAD S0-A26 TO S0-B27. NO DIRECT CONNECT S0-A26 TO CONNECTOR P1.

Cable 05-60002-00

The following figure shows the drawing and pinout for Broadcom cable, 05-60002-00, a x8 SFF-8654 to 2 x4 SFF-8643 connection. Use this cable for NVMe connections on SuperMicro Purley backplanes.

Figure 16: Cable 05-60002-00 Drawing and Pinout

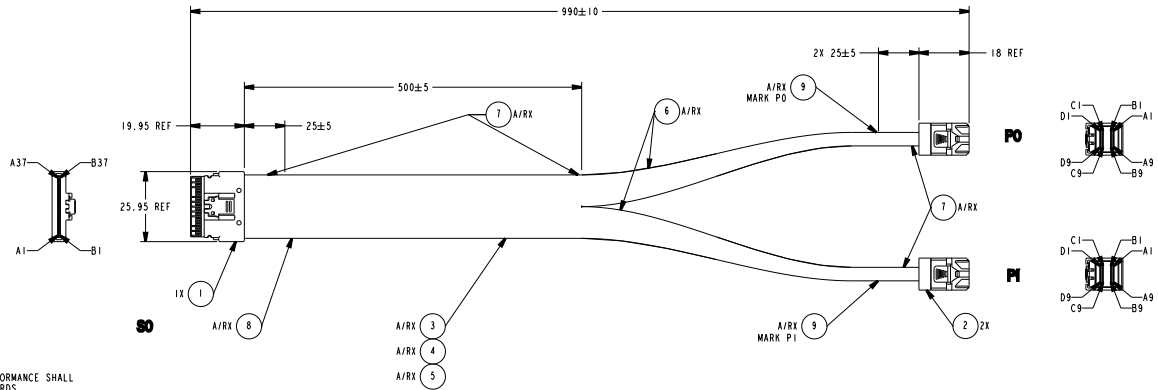


Cable 05-60003-00

The following figure shows the drawing and pinout for Broadcom cable, 05-60003-00, a x8 SFF-8654 to 2 x4 SFF-8643 connection.

Figure 17: Cable 05-60003-00 Drawing and Pinout

REVISIONS				
REV	ECO	DESCRIPTION	DATE	APPROVED
001		PRELIMINARY RELEASE	28FEB18	
002	175141	UPDATE WIRE GAUGE AND IMPEDANCE TOLERANCE ITEM 3; REVISE MARKING REQUIREMENTS NOTE 3.	21NOV19	



- NOTES:**
- DRAWING NOT TO SCALE.
 - ELECTRICAL AND MECHANICAL PERFORMANCE SHALL MEET SAS 4.0 INDUSTRIAL STANDARDS.
 - MARK LABEL (ITEM 8) WITH:
SLIMSAS Y (SFF-9402 SAS)
BROADCOM PART NUMBER
BROADCOM REVISION XXX
DATE CODE DD/MM/YY
SECONDARY MARKING WITH MANUFACTURER PART NUMBER AND REVISION ACCEPTABLE.
 - SEE CABLE WIRING TABLE AND RELATED NOTES.

ITEM	CALLOUT	DESCRIPTION	QUANTITY	NOTES
9	LABEL	LABEL, 40X14MM, WHITE, R2, HF	A/R	
8	LABEL	LABEL, 70X26MM, WHITE, R2, HF	A/R	SEE NOTE 3
7	TAPE	ACETATE TAPE: W=1 INCH	A/R	
6	SLEEVING	EXPANDO TUBE: OD=7MM, BLACK, VW-1, HF	A/R	
5	SLEEVING	EXPANDO TUBE: OD=10MM, BLACK, VW-1, HF	A/R	
4	WIRE	UL1061, STRANDED	A/R	SEE NOTE 4
3	CABLE	SAS CABLE: UL20744, 28-32AWG, 92.5Ω ±10% DIFF, PCIe GEN 4, VW-1, NATURAL, HF	A/R	
2	CONNECTOR	SFF-8643, 36P, STRAIGHT, X4, BLACK, SHORT, SAS 4.0	2	SEE NOTE 4
1	CONNECTOR	SFF-8654, 74P, STRAIGHT, X8, SAS 4.0, PCIe GEN 4	1	SEE NOTE 4

APPROVALS	DATE	UNLESS OTHERWISE SPECIFIED: DIMENSIONS ARE IN MILLIMETERS. TOLERANCES: X.X ± 0.2 MM X.XX ± 0.15 MM X.XXX ± 0.050 MM ANGLES ± 1°	TITLE
DESIGNED BY	15FEB18		CABLE, SFF-8654 X8 TO 2X SFF-8643 X4, 1M
APPROVED BY	28FEB18		
Copyright © 2018 Broadcom Limited All Rights Reserved. No copy, in any form, is permitted without the express written permission of Broadcom Limited. The product is responsible for verifying that the document's revision is current. Moreover, the purchaser is responsible for ensuring adequate documents from their point of sale.			SCALE 1:500
		Dwg No. 5067-6866 Rev 002	SHEET

CONNECTOR	SIGNAL	CONNECTOR	PIN/PAD	CONNECTOR	PIN/PAD	CONNECTOR	SIGNAL	WIRE/CABLE	NOTES
GND		S0	A1	P0	D3	GND	ITEM 3		
Rx0+	A2				D4	Tx0+	ITEM 3		
Rx0-	A3				D5	Tx0-	ITEM 3		
GND	A4				C3/D6	GND	ITEM 3	NOTE 2	
Rx1+	A5				C4	Tx1+	ITEM 3		
Rx1-	A6				C5	Tx1-	ITEM 3		
GND	A7				C6	GND	ITEM 3		
SB7A	A8				A2	SB7	ITEM 4	NOTE 1	
SB4A	A9				C2	SB4	ITEM 4	NOTE 1	
SB3A	A10				B2	SB3	ITEM 4	NOTE 1	
SB0+	A11					NC			
SB0-	A12					NC			
GND	A13				D6	GND	ITEM 3		
Rx2+	A14				D7	Tx2+	ITEM 3		
Rx2-	A15				D8	Tx2-	ITEM 3		
GND	A16				D9/C6	GND	ITEM 3	NOTE 2	
Rx3+	A17				C7	Tx3+	ITEM 3		
Rx3-	A18				C8	Tx3-	ITEM 3		
GND	A19				C9	GND	ITEM 3		
GND	B1				B3	GND	ITEM 3		
Tx0+	B2				B4	Rx0+	ITEM 3		
Tx0-	B3				B5	Rx0-	ITEM 3		
GND	B4				B6/A3	GND	ITEM 3	NOTE 2	
Tx1+	B5				A4	Rx1+	ITEM 3		
Tx1-	B6				A5	Rx1-	ITEM 3		
GND	B7				A6	GND	ITEM 3		
SB0A	B8				A1	SB0	ITEM 4	NOTE 1	
SB1A	B9				B1	SB1	ITEM 4	NOTE 1	
SB2A	B10				C1	SB2	ITEM 4	NOTE 1	
SB5A	B11				D2	SB5	ITEM 4	NOTE 1	
SB6A	B12				D1	SB6	ITEM 4	NOTE 1	
GND	B13				B6	GND	ITEM 3		
Tx2+	B14				B7	Rx2+	ITEM 3		
Tx2-	B15				B8	Rx2-	ITEM 3		
GND	B16				B9/A6	GND	ITEM 3	NOTE 2	
Tx3+	B17				A7	Rx3+	ITEM 3		
Tx3-	B18				A8	Rx3-	ITEM 3		
GND	B19				A9	GND	ITEM 3		

CONNECTOR	SIGNAL	CONNECTOR	PIN/PAD	CONNECTOR	PIN/PAD	CONNECTOR	SIGNAL	WIRE/CABLE	NOTES
GND		S0	A19	P1	D3	GND	ITEM 3		
Rx4+	A20				D4	Tx0+	ITEM 3		
Rx4-	A21				D5	Tx0-	ITEM 3		
GND	A22				C3/D6	GND	ITEM 3	NOTE 2	
Rx5+	A23				C4	Tx1+	ITEM 3		
Rx5-	A24				C5	Tx1-	ITEM 3		
GND	A25				C6	GND	ITEM 3		
SB7B	A26				A2	SB7	ITEM 4	NOTE 1	
SB4B	A27				C2	SB4	ITEM 4	NOTE 1	
SB3B	A28				B2	SB3	ITEM 4	NOTE 1	
SB0+	A29					NC			
SB0-	A30					NC			
GND	A31				D6	GND	ITEM 3		
Rx6+	A32				D7	Tx2+	ITEM 3		
Rx6-	A33				D8	Tx2-	ITEM 3		
GND	A34				D9/C6	GND	ITEM 3	NOTE 2	
Rx7+	A35				C7	Tx3+	ITEM 3		
Rx7-	A36				C8	Tx3-	ITEM 3		
GND	A37				C9	GND	ITEM 3		
GND	B19				B3	GND	ITEM 3		
Tx4+	B20				B4	Rx0+	ITEM 3		
Tx4-	B21				B5	Rx0-	ITEM 3		
GND	B22				B6/A3	GND	ITEM 3	NOTE 2	
Tx5+	B23				A4	Rx1+	ITEM 3		
Tx5-	B24				A5	Rx1-	ITEM 3		
GND	B25				A6	GND	ITEM 3		
SB0B	B26				A1	SB0	ITEM 4	NOTE 1	
SB1B	B27				B1	SB1	ITEM 4	NOTE 1	
SB2B	B28				C1	SB2	ITEM 4	NOTE 1	
SB5B	B29				D2	SB5	ITEM 4	NOTE 1	
SB6B	B30				D1	SB6	ITEM 4	NOTE 1	
GND	B31				B6	GND	ITEM 3		
Tx6+	B32				B7	Rx2+	ITEM 3		
Tx6-	B33				B8	Rx2-	ITEM 3		
GND	B34				B9/A6	GND	ITEM 3	NOTE 2	
Tx7+	B35				A7	Rx3+	ITEM 3		
Tx7-	B36				A8	Rx3-	ITEM 3		
GND	B37				A9	GND	ITEM 3		

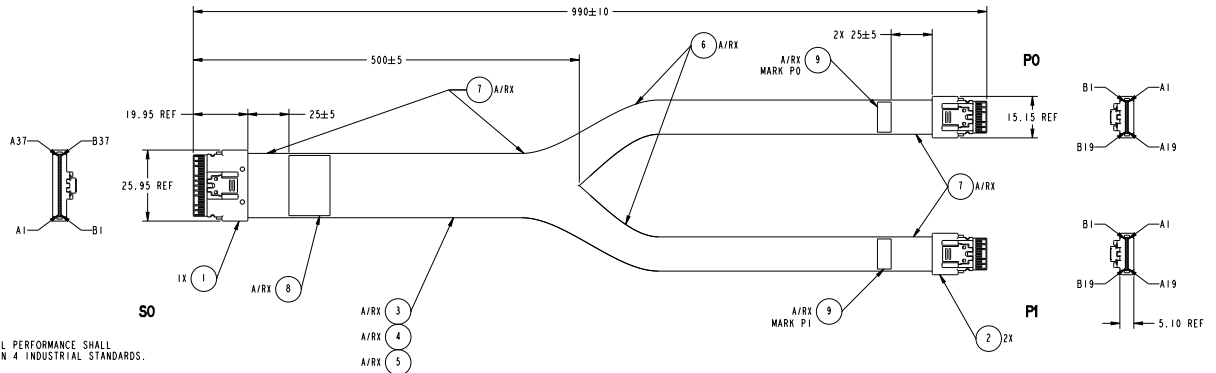
- NOTES:**
- END TO END RESISTANCE OF INDICATED CONNECTION SHALL BE 750 MILLIOHM MAX.
 - CONNECT SHIELD OF DIFFERENTIAL PAIR TO INDICATED PIN/PAD AND SHORT TO SECOND INDICATED PIN/PAD.

Cable 05-60004-00

The following figure shows the drawing and pinout for Broadcom cable, 05-60004-00, a x8 SFF-8654 to 2 x4 SFF-8654 connection.

Figure 18: Cable 05-60004-00 Drawing and Pinout

REVISIONS				
REV	ECO	DESCRIPTION	DATE	APPROVED
001		INITIAL RELEASE	02JAN18	



- NOTES:**
- DRAWING NOT TO SCALE.
 - ELECTRICAL AND MECHANICAL PERFORMANCE SHALL MEET SAS 4.0 AND PCIe GEN 4 INDUSTRIAL STANDARDS.
 - MARK LABEL (ITEM 8) WITH:
SFF-9402 SLIMSAS Y (PCIe & SAS)
PART NUMBER
REVISION XXX
DATE CODE DD/MM/YY
 - SEE CABLE WIRING TABLE.

ITEM	CALCOUT	DESCRIPTION	QUANTITY	NOTES
9	LABEL	LABEL, 40X14MM, WHITE, R2, HF		A/R
8	LABEL	LABEL, 70X26MM, WHITE, R2, HF		A/R
7	TAPE	ACETATE TAPE, W:1 INCH		A/R
6	SLEEVING	EXPANDO TUBE: OD:2MM, GREEN, VW-1, HF		A/R
5	SLEEVING	EXPANDO TUBE: OD:10MM, GREEN, VW-1, HF		A/R
4	WIRE	UL1061, 32AWG, STRANDED		A/R
3	CABLE	SAS CABLE: UL20744, 32AWG, 85OHM DIFF, SAS4, PCIe GEN 4, VW-1, NATURAL, HF		A/R
2	CONNECTOR	SFF-8654, 38P, STRAIGHT, X4, SAS 4.0, PCIe GEN 4	2	SEE NOTE 4
1	CONNECTOR	SFF-8654, 74P, STRAIGHT, X8, SAS 4.0, PCIe GEN 4	1	SEE NOTE 4

APPROVALS	DATE	UNLESS OTHERWISE SPECIFIED, DIMENSIONS ARE IN MILLIMETERS.	BROADCOM®	
DRAWN BY	27DEC17	X.X ± 0.2 MM	TITLE	CABLE, SFF-8654 X8 TO 2X SFF-8654 X4, 1M
APPROVED BY	02JAN18	X.XX ± 0.15 MM	SCALE	1:500
Company Confidential & Copyright Broadcom Limited. All Rights Reserved. No other use or reproduction is permitted without the express written consent of Broadcom. The purchaser is responsible for verifying that the dimensions are correct. Broadcom is not responsible for repairing obsolete documents from their point of sale.		ANGLES ± 1°	SIZE D	5067-6103
			REV	001
			SHEET	

CONNECTOR SIGNAL	CONNECTOR	PIN/PAD	CONNECTOR	PIN/PAD	CONNECTOR SIGNAL	WIRE/CABLE
GND	SO	A1	PO	B1	GND	ITEM 3
Rx0+		A2	B2	Tx0+	ITEM 3	
Rx0-		A3	B3	Tx0-	ITEM 3	
GND		A4	B4	GND	ITEM 3	
Rx1+		A5	B5	Tx1+	ITEM 3	
Rx1-		A6	B6	Tx1-	ITEM 3	
GND		A7	B7	GND	ITEM 3	
SB7A		A8	B8	SB7	ITEM 4	
SB4A		A9	B9	SB4	ITEM 4	
GND(SB3A)		A10	B10	GND(SB3)	ITEM 3	
SB4+		A11	B11	SB4+	ITEM 3	
SB4-		A12	B12	SB4-	ITEM 3	
GND		A13	B13	GND	ITEM 3	
Rx2+		A14	B14	Tx2+	ITEM 3	
Rx2-		A15	B15	Tx2-	ITEM 3	
GND		A16	B16	GND	ITEM 3	
Rx3+		A17	B17	Tx3+	ITEM 3	
Rx3-		A18	B18	Tx3-	ITEM 3	
GND		A19	B19	GND	ITEM 3, NOTE 1	
GND		B1	A1	GND	ITEM 3	
Tx0+		B2	A2	Rx0+	ITEM 3	
Tx0-		B3	A3	Rx0-	ITEM 3	
GND		B4	A4	GND	ITEM 3	
Tx1+		B5	A5	Rx1+	ITEM 3	
Tx1-		B6	A6	Rx1-	ITEM 3	
GND		B7	A7	GND	ITEM 3	
SB0A		B8	A8	SB0	ITEM 4	
SB1A		B9	A9	SB1	ITEM 4	
GND(SB2A)		B10	A10	GND(SB2)	ITEM 3	
SB5A		B11	A11	SB5	ITEM 3	
SB6A		B12	A12	SB6	ITEM 3	
GND		B13	A13	GND	ITEM 3	
Tx2+		B14	A14	Rx2+	ITEM 3	
Tx2-		B15	A15	Rx2-	ITEM 3	
GND		B16	A16	GND	ITEM 3	
Tx3+		B17	A17	Rx3+	ITEM 3	
Tx3-		B18	A18	Rx3-	ITEM 3	
GND		B19	A19	GND	ITEM 3, NOTE 1	

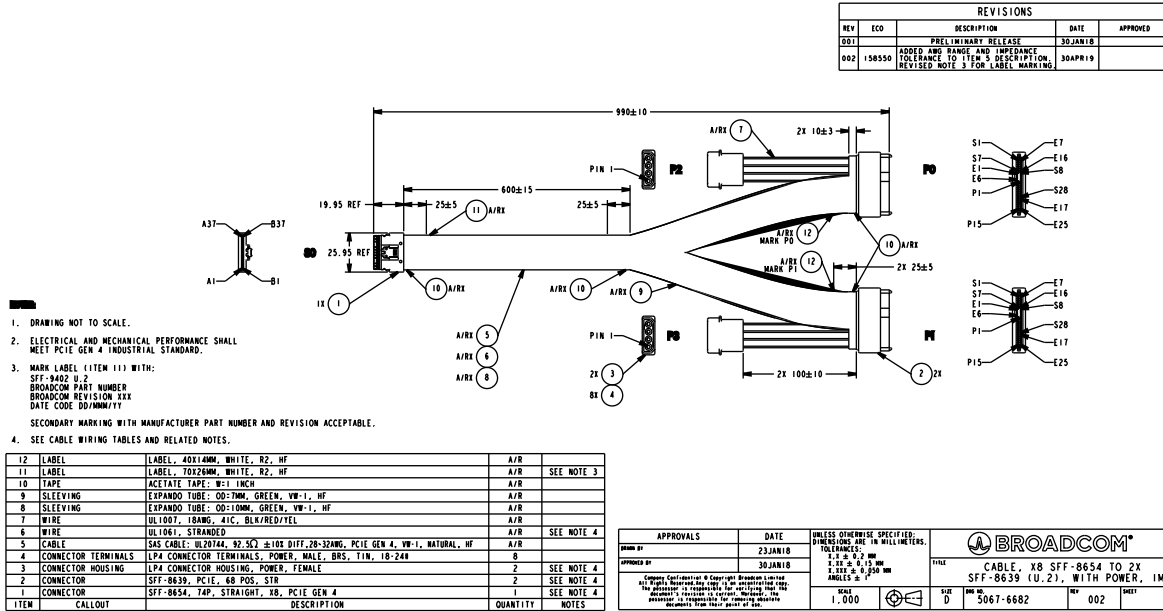
- NOTES:**
- PIN/PAD ON CONNECTOR SO SHARED ON CONNECTORS PO AND PI.

CONNECTOR SIGNAL	CONNECTOR	PIN/PAD	CONNECTOR	PIN/PAD	CONNECTOR SIGNAL	WIRE/CABLE
GND	SO	A19	PI	B1	GND	ITEM 3, NOTE 1
Rx4+		A20	B2	Tx0+	ITEM 3	
Rx4-		A21	B3	Tx0-	ITEM 3	
GND		A22	B4	GND	ITEM 3	
Rx5+		A23	B5	Tx1+	ITEM 3	
Rx5-		A24	B6	Tx1-	ITEM 3	
GND		A25	B7	GND	ITEM 3	
SB7B		A26	B8	SB7	ITEM 4	
SB4B		A27	B9	SB4	ITEM 4	
GND(SB3B)		A28	B10	GND(SB3)	ITEM 3	
SB8+		A29	B11	SB4+	ITEM 3	
SB8-		A30	B12	SB4-	ITEM 3	
GND		A31	B13	GND	ITEM 3	
Rx6+		A32	B14	Tx2+	ITEM 3	
Rx6-		A33	B15	Tx2-	ITEM 3	
GND		A34	B16	GND	ITEM 3	
Rx7+		A35	B17	Tx3+	ITEM 3	
Rx7-		A36	B18	Tx3-	ITEM 3	
GND		A37	B19	GND	ITEM 3	
Tx4+		B19	A1	GND	ITEM 3, NOTE 1	
Tx4-		B20	A2	Rx0+	ITEM 3	
GND		B21	A3	Rx0-	ITEM 3	
Tx5+		B22	A4	GND	ITEM 3	
Tx5-		B23	A5	Rx1+	ITEM 3	
GND		B24	A6	Rx1-	ITEM 3	
SB0B		B25	A7	GND	ITEM 3	
SB0B		B26	A8	SB0	ITEM 4	
SB1B		B27	A9	SB1	ITEM 4	
GND(SB2B)		B28	A10	GND(SB2)	ITEM 3	
SB5B		B29	A11	SB5	ITEM 3	
SB6B		B30	A12	SB6	ITEM 3	
GND		B31	A13	GND	ITEM 3	
Tx6+		B32	A14	Rx2+	ITEM 3	
Tx6-		B33	A15	Rx2-	ITEM 3	
GND		B34	A16	GND	ITEM 3	
Tx7+		B35	A17	Rx3+	ITEM 3	
Tx7-		B36	A18	Rx3-	ITEM 3	
GND		B37	A19	GND	ITEM 3	

Cable 05-60005-00

The following figure shows the drawing and pinout for Broadcom cable, 05-60005-00, a x8 SFF-8654 to 2 U.2 SFF-8639 connection.

Figure 19: Cable 05-60005-00 Drawing and Pinout



ITEM	CALLOUT	DESCRIPTION	QUANTITY	NOTES
12	LABEL	LABEL: 40X14MM, WHITE, R2, HF	A/R	
11	LABEL	LABEL: 70X26MM, WHITE, R2, HF	A/R	SEE NOTE 3
10	TAPE	ACETATE TAPE: 85.1 INCH	A/R	
9	SLEEVING	EXPANDO TUBE: OD:1MM, GREEN, VW-1, HF	A/R	
8	SLEEVING	EXPANDO TUBE: OD:10MM, GREEN, VW-1, HF	A/R	
7	WIRE	UL1007, 18AWG, 41C, BLK/RED/TEL	A/R	
6	WIRE	UL1007, STRANDED	A/R	SEE NOTE 4
5	CABLE	S&S CABLE: UL20744, 42.5C2 ±100 DIFF, 28-32AWG, PCIe GEN 4, VW-1, NATURAL, HF	A/R	
4	CONNECTOR TERMINALS	LP4 CONNECTOR TERMINALS, POWER, MALE, BRS, TIN, 18-24H	8	
3	CONNECTOR HOUSING	LP4 CONNECTOR HOUSING, POWER, FEMALE	2	SEE NOTE 4
2	CONNECTOR	SFF-8639, PCIe, 68 POS, STN	2	SEE NOTE 4
1	CONNECTOR	SFF-8654, TAP, STRAIGHT, XB, PCIe GEN 4	1	SEE NOTE 4

CONNECTOR SIGNAL	SO	PIN/PAD	CONNECTOR	PIN/PAD	CONNECTOR SIGNAL	WIRE/CABLE
GND	A1	A2	E15	GND	ITEM 5	
Rx0+	A2	A3	E14	PER0	ITEM 5	
Rx0-	A3	A4	E13	PER0	ITEM 5	
GND	A4	A5	E12/S22	GND	ITEM 5, NOTE 1	
Rx1+	A5	A6	S21	PER0	ITEM 5	
Rx1-	A6	A7	S20	PER0	ITEM 5	
GND	A7	A8	S19	GND	ITEM 5	
SBA	A8	A9	NC	NC	NOTE 2	
GND/SB3A	A9	A10	E9	GND	ITEM 5	
SBA+	A10	A11	E7	REFCLK+	ITEM 5	
SBA-	A11	A12	E8	REFCLK-	ITEM 5	
GND	A12	A13	S28	GND	ITEM 5	
Rx2+	A13	A14	S27	PER2	ITEM 5	
Rx2-	A14	A15	S26	PER2	ITEM 5	
GND	A15	A16	E22/S25	GND	ITEM 5, NOTE 1	
Rx3+	A16	A17	E21	PER3	ITEM 5	
Rx3-	A17	A18	E20	PER3	ITEM 5	
GND	A18	A19	E19	GND	ITEM 5	
GND	A19	B1	E9	GND	ITEM 5	
Tx0+	B1	B2	E10	PE10	ITEM 5	
Tx0-	B2	B3	E11	PE10	ITEM 5	
GND	B3	B4	E12/S14	GND	ITEM 5, NOTE 1	
Tx1+	B4	B5	S17	PE11	ITEM 5	
Tx1-	B5	B6	S18	PE11	ITEM 5	
GND	B6	B7	S19	GND	ITEM 5	
SBOA	B7	B8	E23	SMCLK	ITEM 6, NOTE 4	
SBI A	B8	B9	E24	SMDAT	ITEM 6, NOTE 4	
GND/SB2A	B9	B10	E22	GND	ITEM 6, NOTE 4	
SBA	B10	B11	E5	PER18	ITEM 6, NOTE 4	
SBA	B11	B12	P4	IFDET0	ITEM 6, NOTE 4	
GND	B12	B13	S22	GND	ITEM 5	
Tx2+	B13	B14	S23	PE12p	ITEM 5	
Tx2-	B14	B15	S24	PE12a	ITEM 5	
GND	B15	B16	S25/S28	GND	ITEM 5, NOTE 1	
Tx3+	B16	B17	E17	PE13	ITEM 5	
Tx3-	B17	B18	E18	PE13	ITEM 5	
GND	B18	B19	E19	GND	ITEM 5	

CONNECTOR SIGNAL	SO	PIN/PAD	CONNECTOR	PIN/PAD	CONNECTOR SIGNAL	WIRE/CABLE
GND	A19	A20	E15	GND	ITEM 5	
Rx4+	A20	A21	E14	PER0	ITEM 5	
Rx4-	A21	A22	E13	PER0	ITEM 5	
GND	A22	A23	E12/S22	GND	ITEM 5, NOTE 1	
Rx5+	A23	A24	S21	PER0	ITEM 5	
Rx5-	A24	A25	S20	PER0	ITEM 5	
GND	A25	A26	S19	GND	ITEM 5	
SBB	A26	A27	NC	NC	NOTE 3	
GND/SB3B	A27	A28	E9	GND	ITEM 5	
SBB+	A28	A29	E7	REFCLK+	ITEM 5	
SBB-	A29	A30	E8	REFCLK-	ITEM 5	
GND	A30	A31	S28	GND	ITEM 5	
Rx6+	A31	A32	S27	PER2	ITEM 5	
Rx6-	A32	A33	S26	PER2	ITEM 5	
GND	A33	A34	S25/S22	GND	ITEM 5, NOTE 1	
Rx7+	A34	A35	E21	PER3	ITEM 5	
Rx7-	A35	A36	E20	PER3	ITEM 5	
GND	A36	A37	E19	GND	ITEM 5	
GND	A37	B19	E9	GND	ITEM 5	
Tx4+	B19	B20	E10	PE10	ITEM 5	
Tx4-	B20	B21	E11	PE10	ITEM 5	
GND	B21	B22	E12/S14	GND	ITEM 5, NOTE 1	
Tx5+	B22	B23	S17	PE11	ITEM 5	
Tx5-	B23	B24	S18	PE11	ITEM 5	
GND	B24	B25	S19	GND	ITEM 5	
SBOB	B25	B26	E23	SMCLK	ITEM 6, NOTE 4	
SBI B	B26	B27	E24	SMDAT	ITEM 6, NOTE 4	
GND/SB2B	B27	B28	E22	GND	ITEM 6, NOTE 4	
SBB	B28	B29	E5	PER18	ITEM 6, NOTE 4	
SBB	B29	B30	P4	IFDET0	ITEM 6, NOTE 4	
GND	B30	B31	S22	GND	ITEM 5	
Tx6+	B31	B32	S23	PE12p	ITEM 5	
Tx6-	B32	B33	S24	PE12a	ITEM 5	
GND	B33	B34	S25/S28	GND	ITEM 5, NOTE 1	
Tx7+	B34	B35	E17	PE13	ITEM 5	
Tx7-	B35	B36	E18	PE13	ITEM 5	
GND	B36	B37	E19	GND	ITEM 5	

- CONNECT SHIELD OF DIFFERENTIAL PAIR TO INDICATED PIN/PAD AND SHORT TO SECOND INDICATED PIN/PAD.
- SHORT PIN/PAD S0-A8 TO S0-B9. NO DIRECT CONNECT S0-A8 TO CONNECTOR P0.
- SHORT PIN/PAD S0-A26 TO S0-B21. NO DIRECT CONNECT S0-A26 TO CONNECTOR P1.
- END TO END RESISTANCE OF INDICATED CONNECTION SHALL BE 750 MILLIOM MAX.

CONNECTOR	PIN/PAD	CONNECTOR SIGNAL	NOTES
P0/P1	S2	S0T+	NO CONNECT
	S3	S0T-	
	S5	S0R-	PIN/PAD SHALL NOT BE CONNECTED VIA CONNECTOR INTERNALS NOR VIA WIRE
	S6	S0R+	
	S9	S1T+	
	S10	S1T-	
	S12	S1R-	
	S13	S1R+	
	S15	RSVD	
	E1	REFCLK+	
	E2	REFCLK-	
	E3	3.3Vaux	
	E4	ePERST#	
	E6	RSVD	
	E16	RSVD	
	E25	DualPortEn#	
	P1	RSVD	
	P2	sPCIeRst	
	P3	RSVD	
	P10	PRST#	
	P11	Activity	

CONNECTOR	PIN/PAD	CONNECTOR SIGNAL	NOTES
P0/P1	S1	GND	GROUND
	S4	GND	ALL PIN/PAD SHALL BE CONNECTED TO COMMON INDIVIDUAL CONNECTOR GROUND
	S5	GND	
	S8	GND	
	S11	GND	
	S14	GND	
	S5	GND	
	P6	GND	
	P12	GND	

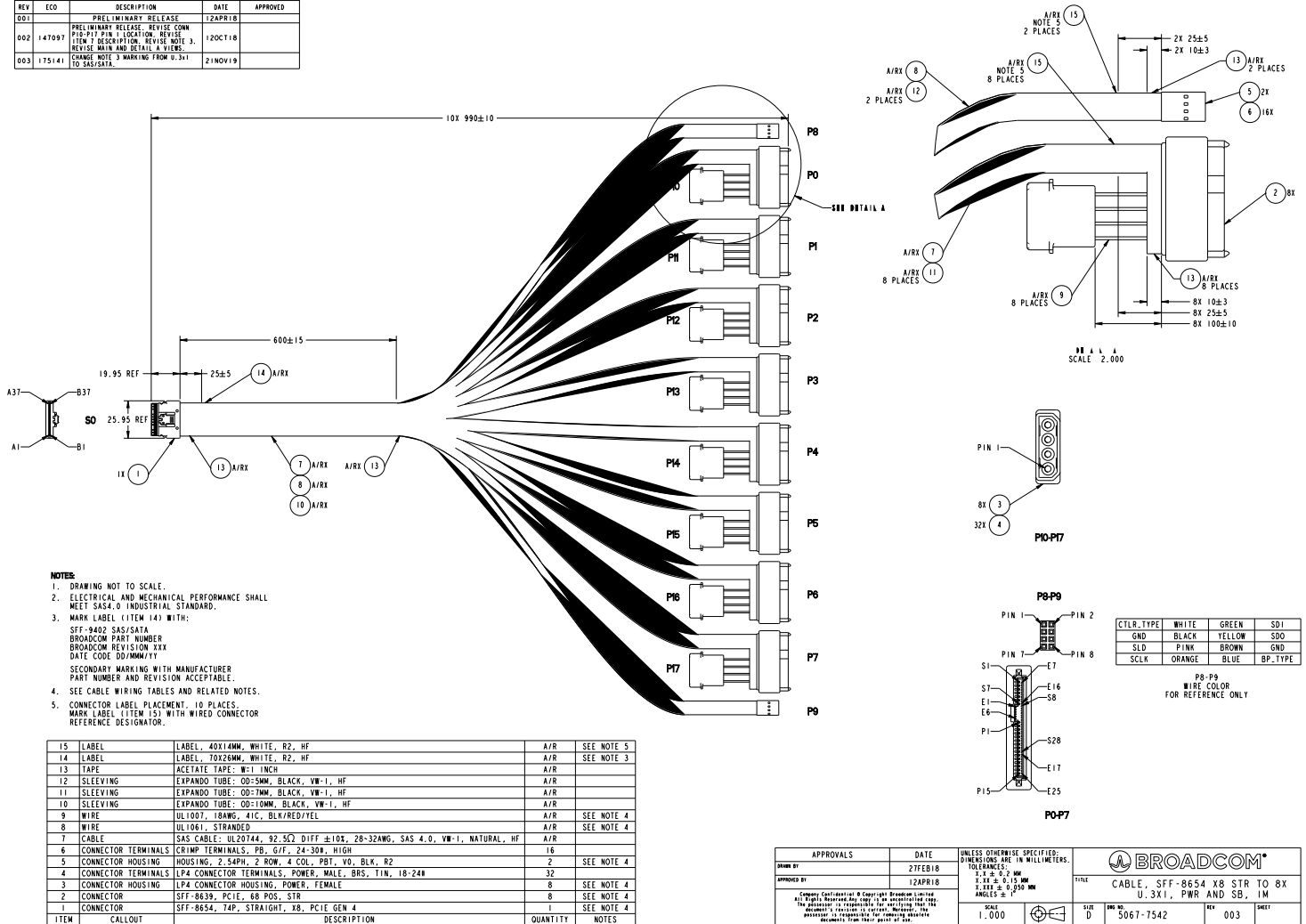
POWER CONNECTOR	PIN SYMBOL	CONNECTOR	PIN SYMBOL	WIRE COLOR
P2	1	I2V	P0	P13, P14, P15 ITEM 7 YELLOW
	2	GND		P12 ITEM 7 BLACK
	3	GND		P6 ITEM 7 BLACK
	4	5V		P7, P8, P9 ITEM 7 RED
P3	1	I2V	P1	P13, P14, P15 ITEM 7 YELLOW
	2	GND		P12 ITEM 7 BLACK
	3	GND		P6 ITEM 7 BLACK
	4	5V		P7, P8, P9 ITEM 7 RED

Cable 05-60006-00

The following figure shows the drawing and pinout for Broadcom cable, 05-60006-00, a x8 SFF-8654 to x8 U.3 SFF-8639 connection.

Figure 20: Cable 05-60006-00 Drawing and Pinout

REVISIONS				
REV	ECO	DESCRIPTION	DATE	APPROVED
001		PRELIMINARY RELEASE	12APR18	
002	14709	PRELIMINARY RELEASE, REVISE CONN P10-P17 PIN 1 LOCATION, REVISE ITEM 7 DESCRIPTION, REVISE NOTE 3, REVISE MAIN AND DETAIL A VIEWS.	12OCT18	
003	17514	CHANGE NOTE 3 MARKING FROM U.3x1 TO SAS2B2A.	21NOV19	



- NOTES:**
- DRAWING NOT TO SCALE.
 - ELECTRICAL AND MECHANICAL PERFORMANCE SHALL MEET SAS4.0 INDUSTRIAL STANDARD.
 - MARK LABEL (ITEM 14) WITH:
 - SFF-8654 SAS/SATA
 - BROADCOM PART NUMBER
 - BROADCOM REVISION XXX
 - DATE CODE DD/MM/YYYY
 SECONDARY MARKING WITH MANUFACTURER PART NUMBER AND REVISION ACCEPTABLE.
 - SEE CABLE WIRING TABLES AND RELATED NOTES.
 - CONNECTOR LABEL PLACEMENT: 10 PLACES. MARK LABEL (ITEM 15) WITH WIRED CONNECTOR REFERENCE DESIGNATOR.

ITEM	CALLOUT	DESCRIPTION	QUANTITY	NOTES
15	LABEL	LABEL, 40X14MM, WHITE, R2, HF	A/R	SEE NOTE 5
14	LABEL	LABEL, 70X26MM, WHITE, R2, HF	A/R	SEE NOTE 3
13	TAPE	ACETATE TAPE, W:1 INCH	A/R	
12	SLEEVING	EXPANDO TUBE: OD:5MM, BLACK, VW-1, HF	A/R	
11	SLEEVING	EXPANDO TUBE: OD:7MM, BLACK, VW-1, HF	A/R	
10	SLEEVING	EXPANDO TUBE: OD:10MM, BLACK, VW-1, HF	A/R	
9	WIRE	UL1007, 18AWG, 4IC, BLK/RED/YEL	A/R	SEE NOTE 4
8	WIRE	UL1061, STRANDED	A/R	SEE NOTE 4
7	CABLE	SAS CABLE: UL20744, 92.5G2 DIFF ±10%, 26-32AWG, SAS 4.0, VW-1, NATURAL, HF	A/R	
6	CONNECTOR TERMINALS	CRIMP TERMINALS, PB, S/F, 24-30#, HIGH	16	
5	CONNECTOR HOUSING	HOUSING, 2.54PH, 2 ROW, 4 COL, PBT, VO, BLK, R2	2	SEE NOTE 4
4	CONNECTOR TERMINALS	LPA CONNECTOR TERMINALS, POWER, MALE, BRS, TIN, 18-24#	32	
3	CONNECTOR HOUSING	LPA CONNECTOR HOUSING, POWER, FEMALE	8	SEE NOTE 4
2	CONNECTOR	SFF-8639, PCIe, 68 POS, STR	8	SEE NOTE 4
1	CONNECTOR	SFF-8654, T4P, STRAIGHT, X8, PCIe GEN 4	1	SEE NOTE 4

CTLR TYPE	WHITE	GREEN	S01
GND	BLACK	YELLOW	S00
SLD	PINK	BROWN	GND
SCLK	ORANGE	BLUE	BP_TYPE

P8-P9 WIRE COLOR FOR REFERENCE ONLY

APPROVALS	DATE	UNLESS OTHERWISE SPECIFIED, DIMENSIONS ARE IN MILLIMETERS. TOLERANCES:	BROADCOM®			
DRAWN BY	27FEB18	L ±0.25 MM	REV	D	5067-7542	SHEET
APPROVED BY	12APR18	R ±0.13 MM	CABLE, SFF-8654 X8 STR TO X8 U.3X1, PWR AND SB, 1M			
<small>Copyright © 2018 Broadcom Limited. All Rights Reserved. Any copy, in any form, is strictly prohibited. This document is confidential and its disclosure is prohibited. The recipient is responsible for ensuring appropriate removal from their record of use.</small>			SCALE	1:000	REV	003

Table with columns: CONNECTOR SIGNAL, CONNECTOR, PIN/PAD, CONNECTOR, PIN/PAD, CONNECTOR SIGNAL, WIRE/CABLE, NOTES. Rows include S0 HOST (A1-A4, B1-B4) and P10 TARGET (P13, P14, P15, P12, P5, P6, P7, P8, P9, P1, P2) connections.

Table with columns: CONNECTOR SIGNAL, CONNECTOR, PIN/PAD, CONNECTOR, PIN/PAD, CONNECTOR SIGNAL, WIRE/CABLE, NOTES. Rows include S0 HOST (A16-A19, B16-B19) and P13 TARGET (P13, P14, P15, P12, P5, P6, P7, P8, P9, P1, P2) connections.

Table with columns: CONNECTOR SIGNAL, CONNECTOR, PIN/PAD, CONNECTOR, PIN/PAD, CONNECTOR SIGNAL, WIRE/CABLE, NOTES. Rows include S0 HOST (A4, A5, A6, A7, B4, B5, B6, B7) and P11 TARGET (P13, P14, P15, P12, P5, P6, P7, P8, P9, P1, P2) connections.

Table with columns: CONNECTOR SIGNAL, CONNECTOR, PIN/PAD, CONNECTOR, PIN/PAD, CONNECTOR SIGNAL, WIRE/CABLE, NOTES. Rows include S0 HOST (A19, A20, A21, A22, B19, B20, B21, B22) and P14 TARGET (P13, P14, P15, P12, P5, P6, P7, P8, P9, P1, P2) connections.

Table with columns: CONNECTOR SIGNAL, CONNECTOR, PIN/PAD, CONNECTOR, PIN/PAD, CONNECTOR SIGNAL, WIRE/CABLE, NOTES. Rows include S0 HOST (A13, A14, A15, A16, B13, B14, B15, B16) and P12 TARGET (P13, P14, P15, P12, P5, P6, P7, P8, P9, P1, P2) connections.

Table with columns: CONNECTOR SIGNAL, CONNECTOR, PIN/PAD, CONNECTOR, PIN/PAD, CONNECTOR SIGNAL, WIRE/CABLE, NOTES. Rows include S0 HOST (A22, A23, A24, A25, B22, B23, B24, B25) and P15 TARGET (P13, P14, P15, P12, P5, P6, P7, P8, P9, P1, P2) connections.

Table with columns: CONNECTOR SIGNAL, CONNECTOR, PIN/PAD, CONNECTOR, PIN/PAD, CONNECTOR SIGNAL, WIRE/CABLE, NOTES. Rows include S0 HOST (A31, A32, A33, A34, B31, B32, B33, B34) and P16 TARGET (P13, P14, P15, P12, P5, P6, P7, P8, P9, P1, P2) connections.

Table with columns: CONNECTOR, PIN/PAD, CONNECTOR SIGNAL, NOTES. Lists signals S9-S28 and their corresponding connector signals (S1+, S1-, S1R-, S1R+, S2+, S2-, S2R-, S2R+, S3+, S3-, S3R-, S3R+, PWRDIS, IFDET#, PRSNT#, Activity/DisableStaggeredSpinup, RefCk1+, RefCk1-, 3.3Vaux, ePERST1#, ePERST0#, IFDET2#, RefCk0+, RefCk0-, GND, PETp0, PETn0, PERn0, PERp0, HPT1, PETp3, PETn3, GND, PERn3, PERp3, SMC1x, SMDa1, DualPort1En#) and notes regarding pin/pad connections.

Table with columns: CONNECTOR SIGNAL, CONNECTOR, PIN/PAD, CONNECTOR, PIN/PAD, CONNECTOR SIGNAL, WIRE/CABLE, NOTES. Rows include S0 HOST (A34, A35, A36, A37, B34, B35, B36, B37) and P17 TARGET (P13, P14, P15, P12, P5, P6, P7, P8, P9, P1, P2) connections.

Table with columns: CONNECTOR SIGNAL, CONNECTOR, PIN/PAD, CONNECTOR, PIN/PAD, CONNECTOR SIGNAL, WIRE/CABLE, NOTES. Lists S0 HOST signals (SB7A-SB7B, SB8A-SB8B, SB9A-SB9B, SB10A-SB10B, SB11A-SB11B, SB12A-SB12B, SB13A-SB13B, SB14A-SB14B) and S0 HOST signals (A26-A30, B26-B30) and their corresponding connector signals (BP.TYPEA, SDOA, GND, NC, SCLKA, SCLKB, SCLDA, SCLDB, SCLKA, SCLKB, SDOB, SDOB, SCLKA, SCLKB, SCLDA, SCLDB, SDOB, SDOB) and notes regarding wire colors and connection types.

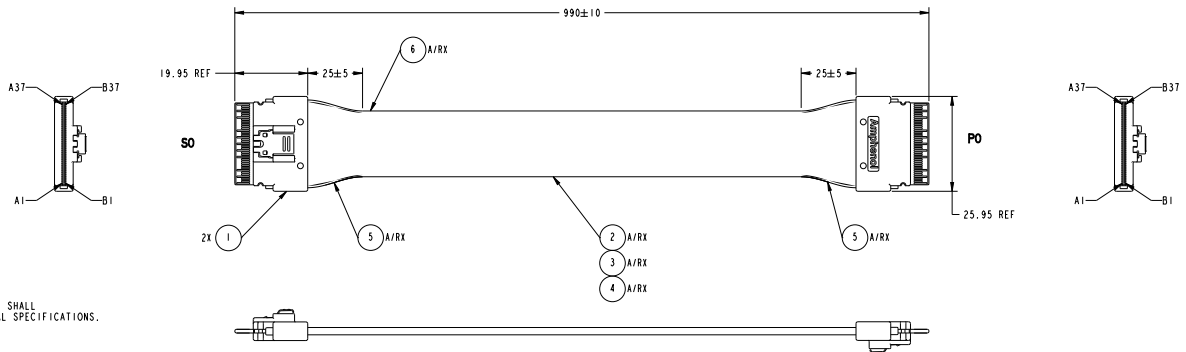
- NOTES: 1. END TO END RESISTANCE OF INDICATED CONNECTION SHALL BE 750 MILLIOHM MAX. 2. SHARED PIN/PAD ON HOST (S0) CONNECTOR. 3. SHARED PIN/PAD ON INDICATED TARGET (P0-P7) CONNECTOR. 4. SHORT PIN/PAD P1 TO P2 OF INDICATED TARGET (P0-P7) CONNECTOR. NO CONNECT TO OTHER CONNECTORS.

Cable 05-60007-00

The following figure shows the drawing and pinout for Broadcom cable, 05-60007-00, a x8 SFF-8654 to x8 SFF-8654 connection.

Figure 21: Cable 05-60007-00 Drawing and Pinout

REVISIONS				
REV	ECO	DESCRIPTION	DATE	APPROVED
001		PRELIMINARY RELEASE	01MAY18	
002	175141	ADD WIRE GAUGE AND IMPEDANCE TOLERANCE. ITEM 2. REVISE MARKING REQUIREMENTS NOTE 3.	21NOV19	



- NOTES:**
- DRAWING NOT TO SCALE.
 - ELECTRICAL AND MECHANICAL PERFORMANCE SHALL MEET SAS 4.0 AND PCIe GEN 4 INDUSTRIAL SPECIFICATIONS.
 - MARK LABEL (ITEM 6) WITH:
SFF-9402 SAS4/PCIe 4
BROADCOM PART NUMBER
BROADCOM REVISION XXX
DATE CODE DD/MM/YY
SECONDARY MARKING WITH MANUFACTURER PART NUMBER AND REVISION ACCEPTABLE.
 - SEE CABLE WIRING TABLE AND RELATED NOTES.

6	LABEL	LABEL, 70x26MM, WHITE, R2, HF	A/R	SEE NOTE 3
5	TAPE	ACETATE TAPE: W=1 INCH	A/R	
4	SLEEVING	EXPANDO TUBE: OD=1.0MM, GREEN, VW-1, HF	A/R	
3	WIRE	UL1061, STRANDED	A/R	
2	CABLE	SAS CABLE: UL20744, 28-32AWG, 92.5C2 ±10% DIFF, SAS4, PCIe GEN 4, VW-1, NATURAL, HF	A/R	SEE NOTE 4
1	CONNECTOR	SFF-8654, 74P, STRAIGHT, X8, STANDARD, SAS 4.0, PCIe GEN 4	2	SEE NOTE 4
ITEM	CALLOUT	DESCRIPTION	QUANTITY	NOTES

APPROVALS	DATE	UNLESS OTHERWISE SPECIFIED: DIMENSIONS ARE IN MILLIMETERS. TOLERANCES:	BROADCOM®						
DRAWN BY	ISFEB18	1.2 ± 0.2 MM	 CABLE, SFF-8654 TO SFF-8654, X8, STRAIGHT, 1M						
APPROVED BY	01MAY18	0.128 ± 0.15 MM							
		ANGLES ± .1°							
SCALE		2.000	SIZE	D	DRG NO.	5067-6869	REV	002	SHEET

CONNECTOR SIGNAL	CONNECTOR	PIN/PAD	CONNECTOR	PIN/PAD	CONNECTOR SIGNAL	WIRE/CABLE	NOTES
GND	S0	A1	P0	B1	GND	ITEM 3	
Rx0+		A2		B2	Tx0+	ITEM 3	
Rx0-		A3		B3	Tx0-	ITEM 3	
GND		A4		B4	GND	ITEM 3	
Rx1+		A5		B5	Tx1+	ITEM 3	
Rx1-		A6		B6	Tx1-	ITEM 3	
GND		A7		B7	GND	ITEM 3	
SB7A		A8		B8	SB7A	ITEM 4	NOTE 1
SB4A		A9		B9	SB4A	ITEM 4	NOTE 1
GND/SB3A		A10		B10	GND/SB3A	ITEM 3	
SB4+		A11		B11	SB4+	ITEM 3	
SB4-		A12		B12	SB4-	ITEM 3	
GND		A13		B13	GND	ITEM 3	
Rx2+		A14		B14	Tx2+	ITEM 3	
Rx2-		A15		B15	Tx2-	ITEM 3	
GND		A16		B16	GND	ITEM 3	
Rx3+		A17		B17	Tx3+	ITEM 3	
Rx3-		A18		B18	Tx3-	ITEM 3	
GND		A19		B19	GND	ITEM 3	
Rx4+		A20		B20	Tx4+	ITEM 3	
Rx4-		A21		B21	Tx4-	ITEM 3	
GND		A22		B22	GND	ITEM 3	
Rx5+		A23		B23	Tx5+	ITEM 3	
Rx5-		A24		B24	Tx5-	ITEM 3	
GND		A25		B25	GND	ITEM 3	
SB7B		A26		B26	SB7B	ITEM 4	NOTE 1
SB4B		A27		B27	SB4B	ITEM 4	NOTE 1
GND/SB3B		A28		B28	GND/SB3B	ITEM 3	
SB8+		A29		B29	SB8+	ITEM 3	
SB8-		A30		B30	SB8-	ITEM 3	
GND		A31		B31	GND	ITEM 3	
Rx6+		A32		B32	Tx6+	ITEM 3	
Rx6-		A33		B33	Tx6-	ITEM 3	
GND		A34		B34	GND	ITEM 3	
Rx7+		A35		B35	Tx7+	ITEM 3	
Rx7-		A36		B36	Tx7-	ITEM 3	
GND		A37		B37	GND	ITEM 3	

- NOTES:**
- END TO END RESISTANCE OF INDICATED CONNECTION SHALL BE 750 MILLIOHM MAX.

CONNECTOR SIGNAL	CONNECTOR	PIN/PAD	CONNECTOR	PIN/PAD	CONNECTOR SIGNAL	WIRE/CABLE	NOTES
GND	S0	B1	P0	A1	GND	ITEM 3	
Tx0+		B2		A2	Rx0+	ITEM 3	
Tx0-		B3		A3	Rx0-	ITEM 3	
GND		B4		A4	GND	ITEM 3	
Tx1+		B5		A5	Rx1+	ITEM 3	
Tx1-		B6		A6	Rx1-	ITEM 3	
GND		B7		A7	GND	ITEM 3	
SB0A		B8		A8	SB0A	ITEM 4	NOTE 1
SB1A		B9		A9	SB1A	ITEM 4	NOTE 1
GND/SB2A		B10		A10	GND/SB2A	ITEM 3	
SB5A		B11		A11	SB5A	ITEM 3	
SB6A		B12		A12	SB6A	ITEM 3	
GND		B13		A13	GND	ITEM 3	
Tx2+		B14		A14	Rx2+	ITEM 3	
Tx2-		B15		A15	Rx2-	ITEM 3	
GND		B16		A16	GND	ITEM 3	
Tx3+		B17		A17	Rx3+	ITEM 3	
Tx3-		B18		A18	Rx3-	ITEM 3	
GND		B19		A19	GND	ITEM 3	
Tx4+		B20		A20	Rx4+	ITEM 3	
Tx4-		B21		A21	Rx4-	ITEM 3	
GND		B22		A22	GND	ITEM 3	
Tx5+		B23		A23	Rx5+	ITEM 3	
Tx5-		B24		A24	Rx5-	ITEM 3	
GND		B25		A25	GND	ITEM 3	
SB0B		B26		A26	SB0B	ITEM 4	NOTE 1
SB1B		B27		A27	SB1B	ITEM 4	NOTE 1
GND/SB2B		B28		A28	GND/SB2B	ITEM 3	
SB5B		B29		A29	SB5B	ITEM 3	
SB6B		B30		A30	SB6B	ITEM 3	
GND		B31		A31	GND	ITEM 3	
Tx6+		B32		A32	Rx6+	ITEM 3	
Tx6-		B33		A33	Rx6-	ITEM 3	
GND		B34		A34	GND	ITEM 3	
Tx7+		B35		A35	Rx7+	ITEM 3	
Tx7-		B36		A36	Rx7-	ITEM 3	
GND		B37		A37	GND	ITEM 3	

Revision History

Version 2.10, December 20, 2023

- Updated the following layout figures in [Broadcom MegaRAID and HBA Tri-Mode Storage Adapter Characteristics](#): 9500-8i, 9560-16i, 9560-8i, 9540-8i, 9500-16i.
- Added [FCC Compliance](#).

Version 2.9, April 6, 2023

Updated the adapter dimensions in [Broadcom MegaRAID and HBA Tri-Mode Storage Adapter Characteristics](#).

Version 2.8, February 7, 2023

- Added NVMe support to the MegaRAID 9540-8i adapter.

Version 2.7, November 22, 2022

- Added [VCCI – Japan](#).

Version 2.6, August 29, 2022

- Revised RAID levels in [RAID Features](#).
- Updated the 05-60006-00 description in [Storage Interface Cabling](#).

Version 2.5, January 13, 2022

- Updated the values regarding the CacheVault power module in [MegaRAID Tri-Mode Storage Adapter Power Supply Requirements](#).
- Added [Adapter Security](#).
- Updated HBA model information in [Marks, Certifications, and Compliance](#).
- Added the MegaRAID 9562-16i and HBA 9502-16i OCP adapters.
- Added the MegaRAID 9540-8i adapter.

Version 2.4, August 25, 2020

- Updated the Sideband Signal Pinout table in [Sideband Signals](#).
- Updated [CacheVault Data Protection](#).

Version 2.3, May 1, 2020

- Updated [PCIe \(NVMe\) Support](#).

Version 2.2, March 17, 2020

- Added connector identifiers to the drawings in [Broadcom MegaRAID and HBA Tri-Mode Storage Adapter Characteristics](#).
- Template update.

Version 2.1, February 12, 2020

- Changed the relative humidity range and temperature range for operating conditions in [Operating and Nonoperating Conditions](#).
- Updated the cable drawing in [Cable 05-60002-00](#).
- Added [Cable 05-60006-00](#) and [Cable 05-60007-00](#).

Version 2.0, December 17, 2019

- Updated [Operating System Support](#).
- Removed Backplanes with Mini-SAS HD Connectors.
- Updated [Figure 5](#).
- Added [External Adapter Connector Pinout](#), [Virtual Pin Port Management](#), [Sideband Signals](#), and [Cable Drawings and Pinouts](#).
- Updated board dimensions in [HBA 9500-16e Adapter – Connector and LED Designations](#), and [HBA 9500-8e Adapter – Connector and LED Designations](#).
- Updated connector and LED locations in [MegaRAID 9580-8i8e Adapter – Connector and LED Designations](#).

Preliminary, Version 1.0, September 27, 2018

Initial document release.

